
Product Name: Artemin Rabbit Monoclonal Antibody**Catalog #: AMRe01678**

For research use only.

Summary

Description	Recombinant rabbit monoclonal antibody
Host	Rabbit
Application	WB,IHC,IP
Reactivity	Human,Mouse,Rat
Conjugation	Unconjugated
Modification	Unmodified
Isotype	IgG
Clonality	Monoclonal
Form	Liquid
Concentration	0.63mg/ml. The concentration of this product may be batch-dependent.
Storage	Aliquot and store at -20°C (valid for 12 months). Avoid freeze/thaw cycles.
Shipping	Ice bags
Buffer	50mM Tris-Glycine(pH 7.4), 0.15M NaCl, 40% Glycerol, 0.01% Sodium azide and 0.05% protective protein
Purification	Affinity Purification

Application

Dilution Ratio	WB 1:500-1:1000,IHC 1:50-1:100,IP 1:20-1:50
Molecular Weight	Calculated MW: 23 kDa; Observed MW: 23 kDa

Antigen Information

Gene Name	ARTN
Alternative Names	Enovin; Neublabin
Gene ID	9048
SwissProt ID	Q5T4W7
Immunogen	A synthetic peptide of human Artemin

Background

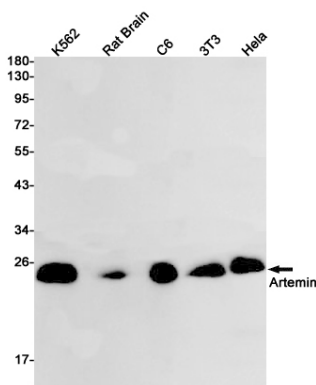
Ligand for the GFR-alpha-3-RET receptor complex but can also activate the GFR-alpha-1-RET receptor complex. Supports the survival of sensory and sympathetic peripheral neurons in culture and also supports the survival of dopaminergic neurons of

the ventral mid-brain. Strong attractant of gut hematopoietic cells thus promoting the formation Peyer's patch-like structures, a major component of the gut-associated lymphoid tissue.

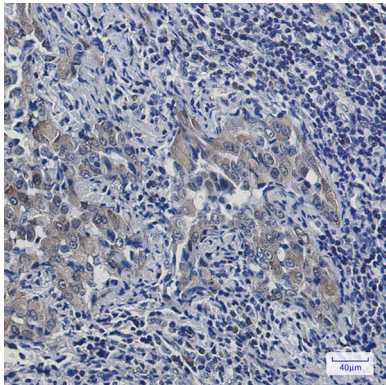
Research Area

Neuroscience

Image Data



Western blot analysis of Artemin in K562, rat Brain, C6, 3T3, HeLa lysates using Artemin antibody.



Immunohistochemistry analysis of paraffin-embedded Human lung cancer using Artemin antibody. High-pressure and temperature Sodium Citrate pH 6.0 was used for antigen retrieval.