

Product Name: Phospho-AP2M1 (Thr156) Rabbit Monoclonal Antibody**Catalog #: AMRe01657**

For research use only.

Summary

Description	Recombinant rabbit monoclonal antibody
Host	Rabbit
Application	WB
Reactivity	Human
Conjugation	Unconjugated
Modification	Phosphorylated
Isotype	IgG
Clonality	Monoclonal
Form	Liquid
Concentration	0.5mg/ml. The concentration of this product may be batch-dependent.
Storage	Aliquot and store at -20°C (valid for 12 months). Avoid freeze/thaw cycles.
Shipping	Ice bags
Buffer	50mM Tris-Glycine(pH 7.4), 0.15M NaCl, 40% Glycerol, 0.01% Sodium azide and 0.05% protective protein
Purification	Affinity Purification

Application

Dilution Ratio	WB 1:500-1:1000
Molecular Weight	Calculated MW: 50 kDa; Observed MW: 50 kDa

Antigen Information

Gene Name	AP2M1 AP-2 complex subunit mu; AP-2 mu chain; Adapter-related protein complex 2 subunit mu;
Alternative Names	Adaptin-mu2; Clathrin assembly protein complex 2 mu medium chain; Clathrin coat assembly protein AP50
Gene ID	1173
SwissProt ID	Q96CW1
Immunogen	A synthetic Phosphorylated peptide corresponding to residues target protein

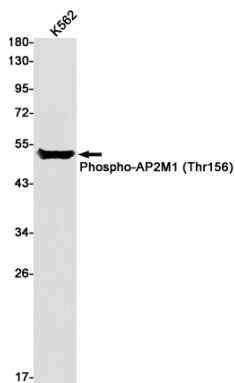
Background

Adaptins are heterotetrameric subunits of adaptors, which are complexes involved in the formation of Clathrin-coated pits for vesicle-mediated endocytosis. Involved in clathrin-dependent endocytosis in which cargo proteins are incorporated into vesicles surrounded by clathrin (clathrin-coated vesicles, CCVs) which are destined for fusion with the early endosome.

Research Area

Signal Transduction

Image Data



Western blot analysis of Phospho-AP2M1 (Thr156) in K562 lysates using Phospho-AP2M1 (Thr156) antibody.