
Product Name: Angiotensin Converting Enzyme 1 Rabbit Monoclonal Antibody**Catalog #: AMRe01647**

For research use only.

Summary

Description	Recombinant rabbit monoclonal antibody
Host	Rabbit
Application	WB,IHC
Reactivity	Mouse,Rat
Conjugation	Unconjugated
Modification	Unmodified
Isotype	IgG
Clonality	Monoclonal
Form	Liquid
Concentration	0.3mg/ml. The concentration of this product may be batch-dependent.
Storage	Aliquot and store at -20°C (valid for 12 months). Avoid freeze/thaw cycles.
Shipping	Ice bags
Buffer	50mM Tris-Glycine(pH 7.4), 0.15M NaCl, 40% Glycerol, 0.01% Sodium azide and 0.05% protective protein
Purification	Affinity Purification

Application

Dilution Ratio	WB 1:500-1:1000,IHC 1:50-1:100
Molecular Weight	Calculated MW: 151 kDa; Observed MW: 180 kDa

Antigen Information

Gene Name	Ace
Alternative Names	ACE; Dipeptidyl carboxypeptidase I; Kininase II
Gene ID	11421.0
SwissProt ID	P09470
Immunogen	Recombinant protein of mouse Angiotensin Converting Enzyme 1

Background

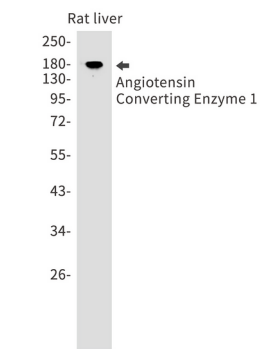
Converts angiotensin I to angiotensin II by release of the terminal His-Leu, this results in an increase of the vasoconstrictor activity of angiotensin. Also able to inactivate bradykinin, a potent vasodilator. Has also a glycosidase activity which releases

GPI-anchored proteins from the membrane by cleaving the mannose linkage in the GPI moiety. This GPIase activity seems to be crucial for the egg-binding ability of the sperm.

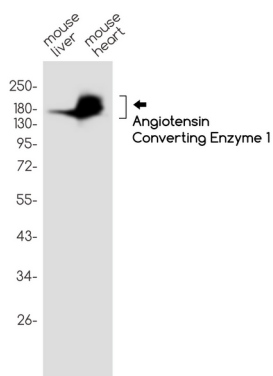
Research Area

Cardiovascular

Image Data



Western blot analysis of Angiotensin Converting Enzyme 1 in rat liver lysates using Angiotensin Converting Enzyme 1 antibody.



Western blot analysis of Angiotensin Converting Enzyme 1 in mouse liver, mouse heart lysates using Angiotensin Converting Enzyme 1 antibody.