
Product Name: alpha B Crystallin Rabbit Monoclonal antibody**Catalog #: AMRe01636**

For research use only.

Summary

| | |
|----------------------|--|
| Description | Recombinant rabbit monoclonal antibody |
| Host | Rabbit |
| Application | WB,ICC/IF,IP |
| Reactivity | Human,Rat |
| Conjugation | Unconjugated |
| Modification | Unmodified |
| Isotype | IgG |
| Clonality | Monoclonal Antibody |
| Form | Liquid |
| Concentration | 0.43mg/ml. The concentration of this product may be batch-dependent. |
| Storage | Aliquot and store at -20°C (valid for 12 months). Avoid freeze/thaw cycles. |
| Shipping | Ice bags |
| Buffer | 50mM Tris-Glycine(pH 7.4), 0.15M NaCl, 40% Glycerol, 0.01% Sodium azide and 0.05% protective protein |
| Purification | Affinity Purified |

Application

| | |
|-------------------------|--|
| Dilution Ratio | WB 1:500-1:1000,ICC/IF 1:50-1:200,IP 1:20-1:50 |
| Molecular Weight | Calculated MW: 20 kDa; Observed MW: 20 kDa |

Antigen Information

| | |
|--------------------------|---|
| Gene Name | CRYAB |
| Alternative Names | CRYAB; CRYA2; Alpha-crystallin B chain; Alpha(B)-crystallin; Heat shock protein beta-5; HspB5; Renal carcinoma antigen NY-REN-27; Rosenthal fiber component |
| Gene ID | 1410 |
| SwissProt ID | P02511 |
| Immunogen | A synthetic peptide of human Alpha B Crystallin |

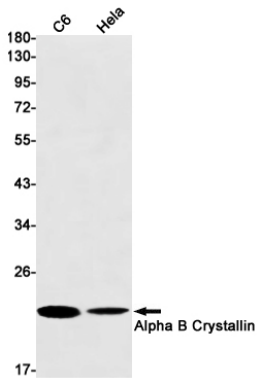
Background

May contribute to the transparency and refractive index of the lens.

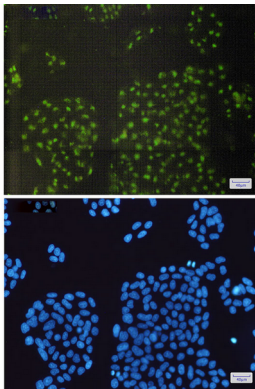
Research Area

Signal Transduction

Image Data



Western blot analysis of Alpha B Crystallin in C6, HeLa lysates using alpha B Crystallin antibody.



Immunocytochemistry analysis of Alpha B Crystallin (green) in HeLa using Alpha B Crystallin antibody, and DAPI (blue)