

Product Name: ALDH7A1 Rabbit Monoclonal Antibody**Catalog #: AMRe01626**

For research use only.

Summary

Description	Recombinant rabbit monoclonal antibody
Host	Rabbit
Application	WB, ICC/IF, IP
Reactivity	Human, Mouse
Conjugation	Unconjugated
Modification	Unmodified
Isotype	IgG
Clonality	Monoclonal
Form	Liquid
Concentration	0.3mg/ml. The concentration of this product may be batch-dependent.
Storage	Aliquot and store at -20°C (valid for 12 months). Avoid freeze/thaw cycles.
Shipping	Ice bags
Buffer	50mM Tris-Glycine(pH 7.4), 0.15M NaCl, 40% Glycerol, 0.01% Sodium azide and 0.05% protective protein
Purification	Affinity Purification

Application

Dilution Ratio	WB 1:500-1:1000, ICC/IF 1:50-1:200, IP 1:20-1:50
Molecular Weight	Calculated MW: 58 kDa; Observed MW: 58 kDa

Antigen Information

Gene Name	ALDH7A1
Alternative Names	aldehyde dehydrogenase 7 family member A1; EPD; PDE; ATQ1
Gene ID	501
SwissProt ID	P49419
Immunogen	A synthetic peptide of human ALDH7A1

Background

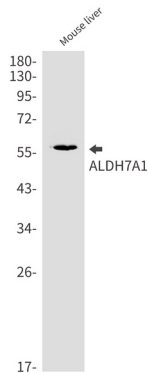
Multifunctional enzyme mediating important protective effects. Metabolizes betaine aldehyde to betaine, an important cellular osmolyte and methyl donor. Protects cells from oxidative stress by metabolizing a number of lipid peroxidation-derived

aldehydes. Involved in lysine catabolism.

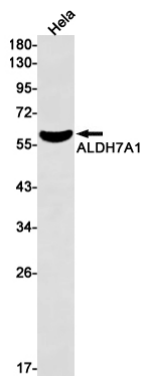
Research Area

Signal Transduction

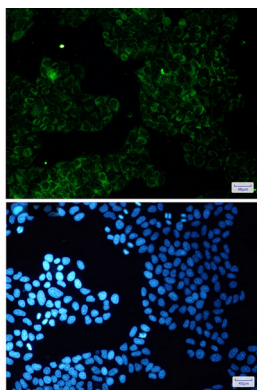
Image Data



Western blot analysis of ALDH7A1 in mouse liver lysates using ALDH7A1 antibody.



Western blot analysis of ALDH7A1 in HeLa lysates using ALDH7A1 antibody.



Immunocytochemistry analysis of ALDH7A1(green) in HeLa using ALDH7A1 antibody, and DAPI(blue)