
Product Name: ADRM1 Rabbit Monoclonal Antibody**Catalog #: AMRe01616**

For research use only.

Summary

Description	Recombinant rabbit monoclonal antibody
Host	Rabbit
Application	WB,IHC,ICC/IF,IP
Reactivity	Human
Conjugation	Unconjugated
Modification	Unmodified
Isotype	IgG
Clonality	Monoclonal
Form	Liquid
Concentration	0.51mg/ml. The concentration of this product may be batch-dependent.
Storage	Aliquot and store at -20°C (valid for 12 months). Avoid freeze/thaw cycles.
Shipping	Ice bags
Buffer	50mM Tris-Glycine(pH 7.4), 0.15M NaCl, 40% Glycerol, 0.01% Sodium azide and 0.05% protective protein
Purification	Affinity Purification

Application

Dilution Ratio	WB 1:500-1:1000,IHC 1:50-1:100,ICC/IF 1:50-1:200,IP 1:20-1:50
Molecular Weight	Calculated MW: 42 kDa; Observed MW: 42 kDa

Antigen Information

Gene Name	ADRM1
Alternative Names	ARM1; ARM-1; GP110
Gene ID	11047
SwissProt ID	Q16186
Immunogen	A synthetic peptide of human ADRM1

Background

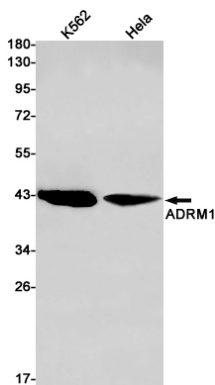
Component of the 26S proteasome, a multiprotein complex involved in the ATP-dependent degradation of ubiquitinated proteins. This complex plays a key role in the maintenance of protein homeostasis by removing misfolded or damaged

proteins, which could impair cellular functions, and by removing proteins whose functions are no longer required. Therefore, the proteasome participates in numerous cellular processes, including cell cycle progression, apoptosis, or DNA damage repair. Within the complex, functions as a proteasomal ubiquitin receptor. Engages and activates 19S-associated deubiquitinases UCHL5 and PSMD14 during protein degradation. UCHL5 reversibly associate with the 19S regulatory particle whereas PSMD14 is an intrinsic subunit of the proteasome lid subcomplex.

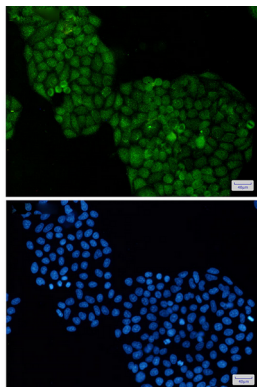
Research Area

Signal Transduction

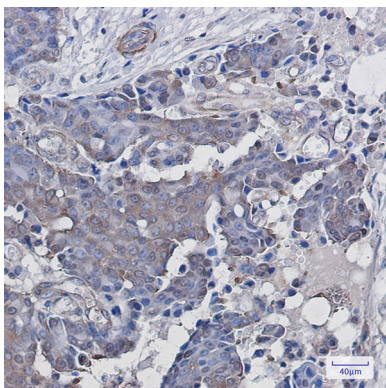
Image Data



Western blot analysis of ADRM1 in K562, HeLa lysates using ADRM1 antibody.



Immunocytochemistry analysis of ADRM1(green) in HeLa using ADRM1 antibody, and DAPI(blue)



Immunohistochemistry analysis of paraffin-embedded Human breast cancer using ADRM1 antibody. High-pressure and temperature Sodium Citrate pH 6.0 was used for antigen retrieval.