

---

**Product Name: Activin A Receptor Type IB Rabbit Monoclonal Antibody****Catalog #: AMRe01608**

For research use only.

**Summary**

<b>Description</b>	Recombinant rabbit monoclonal antibody
<b>Host</b>	Rabbit
<b>Application</b>	WB,ICC/IF
<b>Reactivity</b>	Mouse,Rat,Hamster
<b>Conjugation</b>	Unconjugated
<b>Modification</b>	Unmodified
<b>Isotype</b>	IgG
<b>Clonality</b>	Monoclonal
<b>Form</b>	Liquid
<b>Concentration</b>	0.51mg/ml. The concentration of this product may be batch-dependent.
<b>Storage</b>	Aliquot and store at -20°C (valid for 12 months). Avoid freeze/thaw cycles.
<b>Shipping</b>	Ice bags
<b>Buffer</b>	50mM Tris-Glycine(pH 7.4), 0.15M NaCl, 40% Glycerol, 0.01% Sodium azide and 0.05% protective protein
<b>Purification</b>	Affinity Purification

**Application**

<b>Dilution Ratio</b>	WB 1:500-1:1000,ICC/IF 1:50-1:200
<b>Molecular Weight</b>	Calculated MW: 57 kDa; Observed MW: 57 kDa

**Antigen Information**

<b>Gene Name</b>	ACVR1B
<b>Alternative Names</b>	ACVR1B; ACVRLK4; ALK4; Activin receptor type-1B; Activin receptor type IB; ACTR-IB; Activin receptor-like kinase 4; ALK-4; Serine/threonine-protein kinase receptor R2; SKR2
<b>Gene ID</b>	91
<b>SwissProt ID</b>	P36896
<b>Immunogen</b>	A synthetic peptide of human Activin A Receptor Type IB

**Background**

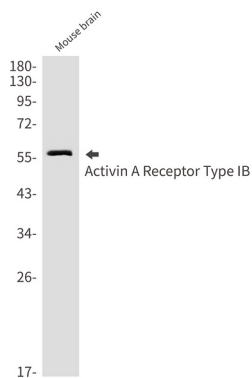
On ligand binding, forms a receptor complex consisting of two type II and two type I transmembrane serine/threonine kinases.

Type II receptors phosphorylate and activate type I receptors which autophosphorylate, then bind and activate SMAD transcriptional regulators. Phosphorylates TDP2.

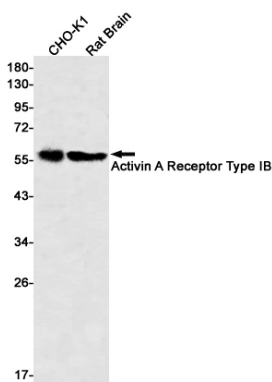
## Research Area

Signal Transduction

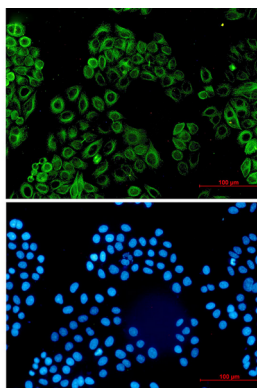
## Image Data



Western blot analysis of Activin A Receptor Type IB in mouse brain lysates using Activin A Receptor Type IB antibody.



Western blot analysis of Activin A Receptor Type IB in CHO-K1, rat Brain lysates using Activin A Receptor Type IB antibody.



Immunocytochemistry analysis of Activin A Receptor Type IB (green) in HeLa using Activin A Receptor Type IB antibody, and DAPI (blue)