
Product Name: 14-3-3 Rabbit Monoclonal Antibody**Catalog #: AMRe01592**

For research use only.

Summary

Description	Recombinant rabbit monoclonal antibody
Host	Rabbit
Application	WB
Reactivity	Human, Mouse, Rat
Conjugation	Unconjugated
Modification	Unmodified
Isotype	IgG
Clonality	Monoclonal
Form	Liquid
Concentration	0.5mg/ml. The concentration of this product may be batch-dependent.
Storage	Aliquot and store at -20°C (valid for 12 months). Avoid freeze/thaw cycles.
Shipping	Ice bags
Buffer	50mM Tris-Glycine(pH 7.4), 0.15M NaCl, 40% Glycerol, 0.01% Sodium azide and 0.05% protective protein
Purification	Affinity Purification

Application

Dilution Ratio	WB 1:500-1:1000
Molecular Weight	Calculated MW: 28 kDa; Observed MW: 28 kDa

Antigen Information

Gene Name	YWHAB
Alternative Names	YWHAB; 14-3-3 protein beta/alpha; Protein 1054; Protein kinase C inhibitor protein 1; KCIP-1
Gene ID	7529
SwissProt ID	P31946
Immunogen	A synthetic peptide of human 14-3-3 alpha/beta

Background

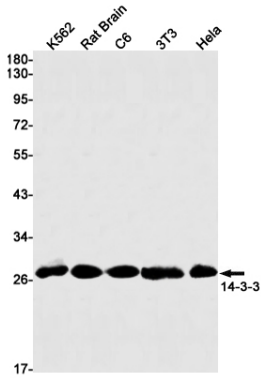
Adapter protein implicated in the regulation of a large spectrum of both general and specialized signaling pathways. Binds to a large number of partners, usually by recognition of a phosphoserine or phosphothreonine motif. Binding generally results in

the modulation of the activity of the binding partner. Negative regulator of osteogenesis.

Research Area

Neuroscience

Image Data



Western blot analysis of 41701 in K562, rat Brain, C6, 3T3, HeLa lysates using 14-3-3 antibody.