
Product Name: ATG7 Rabbit Monoclonal Antibody**Catalog #: AMRe01586**

For research use only.

Summary

Description	Recombinant rabbit monoclonal antibody
Host	Rabbit
Application	WB,IHC,IF,ELISA
Reactivity	Human,Mouse,Rat
Conjugation	Unconjugated
Modification	Unmodified
Isotype	IgG
Clonality	Monoclonal
Form	Liquid
Concentration	0.3mg/ml. The concentration of this product may be batch-dependent.
Storage	Aliquot and store at -20°C (valid for 12 months). Avoid freeze/thaw cycles.
Shipping	Ice bags
Buffer	50mM Tris-Glycine(pH 7.4), 0.15M NaCl, 40% Glycerol, 0.01% Sodium azide and 0.05% protective protein
Purification	Affinity Purification

Application

Dilution Ratio	IHC 1:200-1:1000;WB 1:1000-1:5000;IF 1:200-1:1000;ELISA 1:5000-1:20000;
Molecular Weight	Calculated MW: 78 kDa; Observed MW: 78 kDa

Antigen Information

Gene Name	ATG7
Alternative Names	hAGP7; Ubiquitin-activating enzyme E1-like protein; APG7L
Gene ID	10533
SwissProt ID	O95352
Immunogen	A synthetic peptide of human ATG7

Background

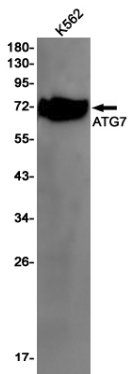
The molecular machinery of autophagy was largely discovered in yeast and referred to as autophagy-related (Atg) genes. Formation of the autophagosome involves a ubiquitin-like conjugation system in which Atg12 is covalently bound to Atg5 and

targeted to autophagosome vesicles. This conjugation reaction is mediated by the ubiquitin E1-like enzyme Atg7 and the E2-like enzyme Atg10.

Research Area

Cell Biology

Image Data



Western blot analysis of ATG7 in K562 lysates using ATG7 antibody.