
Product Name: Phospho-Tau (Ser404) Rabbit Monoclonal Antibody**Catalog #: AMRe01576**

For research use only.

Summary

Description	Recombinant rabbit monoclonal antibody
Host	Rabbit
Application	WB
Reactivity	Human,Rat
Conjugation	Unconjugated
Modification	Phosphorylated
Isotype	IgG
Clonality	Monoclonal
Form	Liquid
Concentration	0.5mg/ml. The concentration of this product may be batch-dependent.
Storage	Aliquot and store at -20°C (valid for 12 months). Avoid freeze/thaw cycles.
Shipping	Ice bags
Buffer	50mM Tris-Glycine(pH 7.4), 0.15M NaCl, 40% Glycerol, 0.01% Sodium azide and 0.05% protective protein
Purification	Affinity Purification

Application

Dilution Ratio	WB 1:500-1:1000
Molecular Weight	Calculated MW: 79 kDa; Observed MW: 50-80 kDa

Antigen Information

Gene Name	MAPT
Alternative Names	MAPT; MAPTL; MTBT1; TAU; Microtubule-associated protein tau; Neurofibrillary tangle protein; Paired helical filament-tau; PHF-tau
Gene ID	4137
SwissProt ID	P10636
Immunogen	A synthetic Phosphorylated peptide corresponding to residues target protein

Background

This gene encodes the microtubule-associated protein tau (MAPT) whose transcript undergoes complex, regulated alternative

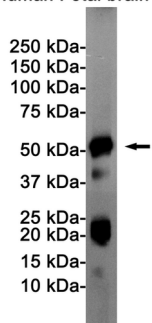
splicing, giving rise to several mRNA species. MAPT transcripts are differentially expressed in the nervous system, depending on stage of neuronal maturation and neuron type.

Research Area

Neuroscience

Image Data

Human Fetal brain



Western blot analysis of Tau (Phospho-Ser404) in Human Fetal brain lysates using Phospho-Tau (Ser404) antibody.