
Product Name: Phospho-Smad2 (Ser255) Rabbit Monoclonal antibody**Catalog #: AMRe01554**

For research use only.

Summary

Description	Recombinant rabbit monoclonal antibody
Host	Rabbit
Application	WB,IHC,IP
Reactivity	Human
Conjugation	Unconjugated
Modification	Phosphorylated
Isotype	IgG
Clonality	Monoclonal Antibody
Form	Liquid
Concentration	0.21mg/ml. The concentration of this product may be batch-dependent.
Storage	Aliquot and store at -20°C (valid for 12 months). Avoid freeze/thaw cycles.
Shipping	Ice bags
Buffer	50mM Tris-Glycine(pH 7.4), 0.15M NaCl, 40% Glycerol, 0.01% Sodium azide and 0.05% protective protein
Purification	Affinity Purified

Application

Dilution Ratio	WB 1:500-1:1000,IHC 1:50-1:100,IP 1:20-1:50
Molecular Weight	Calculated MW: 52 kDa; Observed MW: 60 kDa

Antigen Information

Gene Name	SMAD2 SMAD2; MADH2; MADR2; Mothers against decapentaplegic homolog 2; MAD homolog 2;
Alternative Names	Mothers against DPP homolog 2; JV18-1; Mad-related protein 2; hMAD-2; SMAD family member 2; SMAD 2; Smad2; hSMAD2
Gene ID	4087
SwissProt ID	Q15796
Immunogen	A synthetic phosphopeptide corresponding to residues surrounding Ser255 of human Smad2

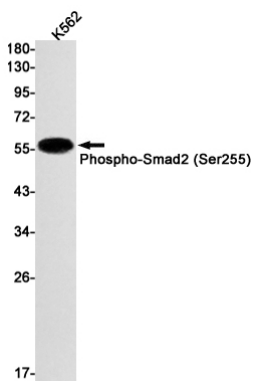
Background

The protein encoded by this gene belongs to the SMAD, a family of proteins similar to the gene products of the *Drosophila* gene 'mothers against decapentaplegic' (Mad) and the *C. elegans* gene Sma. SMAD proteins are signal transducers and transcriptional modulators that mediate multiple signaling pathways.

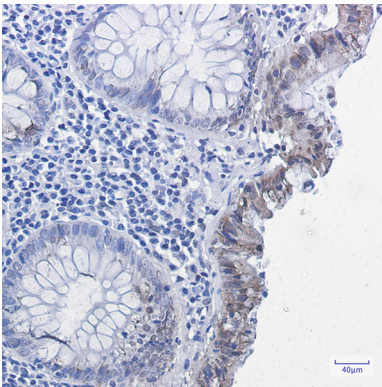
Research Area

Signal Transduction

Image Data



Western blot analysis of Phospho-Smad2 (Ser255) in K562 lysates using Phospho-Smad2 (Ser255) antibody.



Immunohistochemistry analysis of paraffin-embedded Human colon cancer using Phospho-Smad2 (Ser255) antibody. High-pressure and temperature Sodium Citrate pH 6.0 was used for antigen retrieval.