
Product Name: Phospho-MDM2 (Ser166) Rabbit Monoclonal Antibody**Catalog #: AMRe01553**

For research use only.

Summary

Description	Recombinant rabbit monoclonal antibody
Host	Rabbit
Application	WB,IHC
Reactivity	Human,Rat
Conjugation	Unconjugated
Modification	Phosphorylated
Isotype	IgG
Clonality	Monoclonal
Form	Liquid
Concentration	0.5mg/ml. The concentration of this product may be batch-dependent.
Storage	Aliquot and store at -20°C (valid for 12 months). Avoid freeze/thaw cycles.
Shipping	Ice bags
Buffer	50mM Tris-Glycine(pH 7.4), 0.15M NaCl, 40% Glycerol, 0.01% Sodium azide and 0.05% protective protein
Purification	Affinity Purification

Application

Dilution Ratio	WB 1:500-1:1000,IHC 1:50-1:100
Molecular Weight	Calculated MW: 55 kDa; Observed MW: 90 kDa

Antigen Information

Gene Name	MDM2
Alternative Names	Double minute 2 protein; Hdm2; Oncoprotein Mdm2
Gene ID	4193
SwissProt ID	Q00987
Immunogen	A synthetic Phosphorylated peptide corresponding to residues target protein

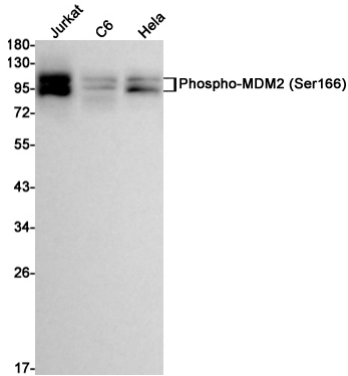
Background

E3 ubiquitin-protein ligase that mediates ubiquitination of p53/TP53, leading to its degradation by the proteasome.

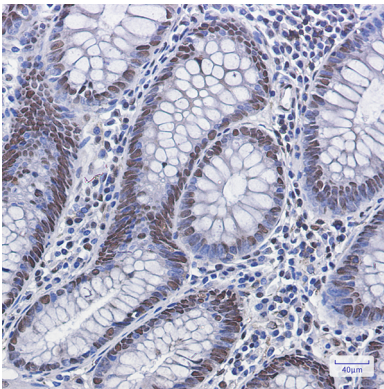
Research Area

Neuroscience

Image Data



Western blot analysis of Phospho-MDM2 (Ser166) in Jurkat, C6, HeLa lysates using Phospho-MDM2 (Ser166) antibody.



Immunohistochemistry analysis of paraffin-embedded Human colon cancer using Phospho-MDM2 (Ser166) antibody. High-pressure and temperature Sodium Citrate pH 6.0 was used for antigen retrieval.