

Product Name: Phospho-eIF2A (Ser51) Rabbit Monoclonal Antibody**Catalog #: AMRe01552**

For research use only.

Summary

Description	Recombinant rabbit monoclonal antibody
Host	Rabbit
Application	WB
Reactivity	Human, Mouse, Rat
Conjugation	Unconjugated
Modification	Phosphorylated
Isotype	IgG
Clonality	Monoclonal
Form	Liquid
Concentration	0.5mg/ml. The concentration of this product may be batch-dependent.
Storage	Aliquot and store at -20°C (valid for 12 months). Avoid freeze/thaw cycles.
Shipping	Ice bags
Buffer	50mM Tris-Glycine(pH 7.4), 0.15M NaCl, 40% Glycerol, 0.01% Sodium azide and 0.05% protective protein
Purification	Affinity Purification

Application

Dilution Ratio	WB 1:500-1:1000
Molecular Weight	Calculated MW: 36 kDa; Observed MW: 36 kDa

Antigen Information

Gene Name	EIF2S1
Alternative Names	EIF2S1; EIF2A; Eukaryotic translation initiation factor 2 subunit 1; Eukaryotic translation initiation factor 2 subunit alpha; eIF-2-alpha; eIF-2A; eIF-2alpha
Gene ID	1965
SwissProt ID	P05198
Immunogen	A synthetic Phosphorylated peptide corresponding to residues target protein

Background

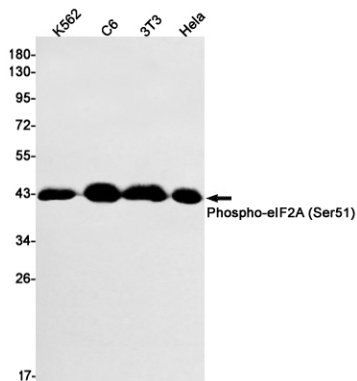
eIF2A a translation initiation factor that functions in the early steps of protein synthesis by forming a ternary complex with GTP

and initiator tRNA. This complex binds to a 40s ribosomal subunit, followed by mRNA binding to form a 43S preinitiation complex.

Research Area

Epigenetics and Nuclear Signaling

Image Data



Western blot analysis of Phospho-eIF2A (Ser51) in K562, C6, 3T3, HeLa lysates using Phospho-eIF2A (Ser51) antibody.