

---

**Product Name: Phospho-BRAF (Thr401) Rabbit Monoclonal antibody****Catalog #: AMRe01548**

For research use only.

**Summary**

<b>Description</b>	Recombinant rabbit monoclonal antibody
<b>Host</b>	Rabbit
<b>Application</b>	WB,IP
<b>Reactivity</b>	Human,Mouse,Rat
<b>Conjugation</b>	Unconjugated
<b>Modification</b>	Phosphorylated
<b>Isotype</b>	IgG
<b>Clonality</b>	Monoclonal Antibody
<b>Form</b>	Liquid
<b>Concentration</b>	0.11mg/ml. The concentration of this product may be batch-dependent.
<b>Storage</b>	Aliquot and store at -20°C (valid for 12 months). Avoid freeze/thaw cycles.
<b>Shipping</b>	Ice bags
<b>Buffer</b>	50mM Tris-Glycine(pH 7.4), 0.15M NaCl, 40% Glycerol, 0.01% Sodium azide and 0.05% protective protein
<b>Purification</b>	Affinity Purified

**Application**

<b>Dilution Ratio</b>	WB 1:500-1:1000,IP 1:20-1:50
<b>Molecular Weight</b>	Calculated MW: 84 kDa; Observed MW: 84 kDa

**Antigen Information**

<b>Gene Name</b>	BRAF
<b>Alternative Names</b>	BRAF; BRAF1; RAFB1; Serine/threonine-protein kinase B-raf; Proto-oncogene B-Raf; p94; v-Raf murine sarcoma viral oncogene homolog B1
<b>Gene ID</b>	673
<b>SwissProt ID</b>	P15056
<b>Immunogen</b>	A synthetic phosphopeptide corresponding to residues surrounding Thr401 of human B Raf

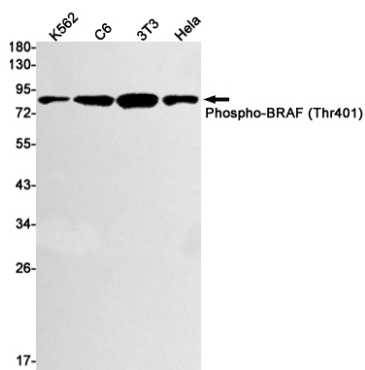
**Background**

Involved in the transduction of mitogenic signals from the cell membrane to the nucleus. May play a role in the postsynaptic responses of hippocampal neuron. Frequently mutated in thyroid cancers, skin melanomas and at lower frequency in a wide range of human cancers. An activating mutation, mimicking phosphorylation of the activation loop, is seen in 60% of malignant melanoma samples. Raf mutations are generally exclusive to Ras activating mutations.

## Research Area

Cell Biology

## Image Data



Western blot analysis of Phospho-BRAF (Thr401) in K562, C6, 3T3, HeLa lysates using Phospho-BRAF (Thr401) antibody.