

Product Name: Phospho-Nrf2 (Ser40) Rabbit Monoclonal antibody**Catalog #: AMRe01540**

For research use only.

Summary

Description	Recombinant rabbit monoclonal antibody
Host	Rabbit
Application	WB,IHC
Reactivity	Human
Conjugation	Unconjugated
Modification	Phosphorylated
Isotype	IgG
Clonality	Monoclonal Antibody
Form	Liquid
Concentration	0.21mg/ml. The concentration of this product may be batch-dependent.
Storage	Aliquot and store at -20°C (valid for 12 months). Avoid freeze/thaw cycles.
Shipping	Ice bags
Buffer	50mM Tris-Glycine(pH 7.4), 0.15M NaCl, 40% Glycerol, 0.01% Sodium azide and 0.05% protective protein
Purification	Affinity Purified

Application

Dilution Ratio	WB 1:500-1:1000,IHC 1:50-1:100
Molecular Weight	Calculated MW: 68 kDa; Observed MW: 100 kDa

Antigen Information

Gene Name	NFE2L2
Alternative Names	NFE2L2; NRF2; Nuclear factor erythroid 2-related factor 2; NF-E2-related factor 2; NFE2-related factor 2; HEBP1; Nuclear factor; erythroid derived 2; like 2
Gene ID	4780
SwissProt ID	Q16236
Immunogen	A synthetic phosphopeptide corresponding to residues surrounding Ser40 of human Nrf2

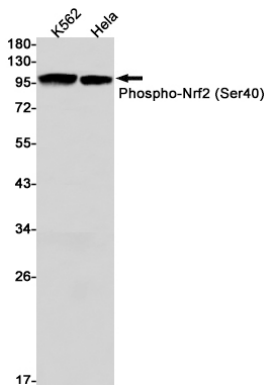
Background

Transcription activator that binds to antioxidant response (ARE) elements in the promoter regions of target genes. Important for the coordinated up-regulation of genes in response to oxidative stress. May be involved in the transcriptional activation of genes of the beta-globin cluster by mediating enhancer activity of hypersensitive site 2 of the beta-globin locus control region.

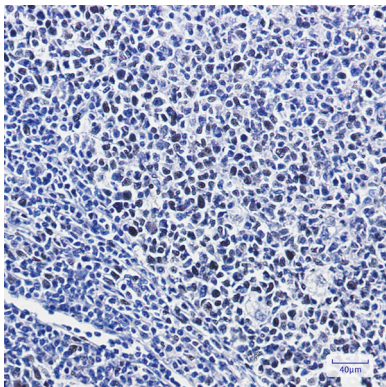
Research Area

Epigenetics and Nuclear Signaling

Image Data



Western blot analysis of Phospho-Nrf2 (Ser40) in K562, HeLa lysates using Phospho-Nrf2 (Ser40) antibody.



Immunohistochemistry analysis of paraffin-embedded Human tonsil using Nrf2 (Phospho-S40) antibody. High-pressure and temperature Sodium Citrate pH 6.0 was used for antigen retrieval.