
Product Name: NEDD8 Rabbit Monoclonal antibody**Catalog #: AMRe01535**

For research use only.

Summary

Description	Recombinant rabbit monoclonal antibody
Host	Rabbit
Application	WB,IHC,ICC/IF,IP
Reactivity	Human
Conjugation	Unconjugated
Modification	Unmodified
Isotype	IgG
Clonality	Monoclonal Antibody
Form	Liquid
Concentration	0.11mg/ml. The concentration of this product may be batch-dependent.
Storage	Aliquot and store at -20°C (valid for 12 months). Avoid freeze/thaw cycles.
Shipping	Ice bags
Buffer	50mM Tris-Glycine(pH 7.4), 0.15M NaCl, 40% Glycerol, 0.01% Sodium azide and 0.05% protective protein
Purification	Affinity Purified

Application

Dilution Ratio	WB 1:500-1:1000,IHC 1:50-1:100,ICC/IF 1:50-1:200,IP 1:20-1:50
Molecular Weight	Calculated MW: 9 kDa; Observed MW: 9 kDa

Antigen Information

Gene Name	NEDD8
Alternative Names	NEDD8; NEDD8; Neddylin; Neural precursor cell expressed developmentally down-regulated protein 8; NEDD-8; Ubiquitin-like protein Nedd8
Gene ID	4738
SwissProt ID	Q15843
Immunogen	A synthetic peptide of human NEDD8

Background

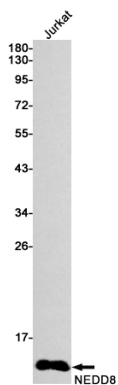
Neural precursor cell-expressed developmentally downregulated protein 8 (NEDD8), also known as Rub1 (related to ubiquitin

1) in plants and yeast, is a member of the ubiquitin-like protein family. The covalent attachment of NEDD8 to target proteins, termed neddylation, is a reversible, multi-step process analogous to ubiquitination.

Research Area

Cell Biology

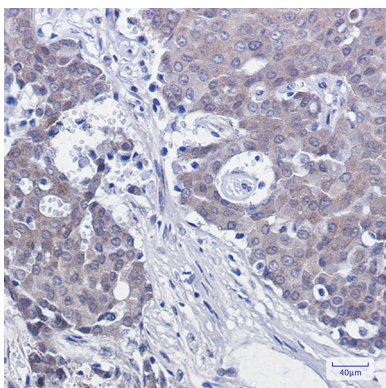
Image Data



Western blot analysis of NEDD8 in Jurkat lysates using NEDD8 antibody.



Immunocytochemistry analysis of NEDD8(green) in HeLa using NEDD8 antibody, and DAPI(blue)



Immunohistochemistry analysis of paraffin-embedded Human breast cancer using NEDD8 antibody. High-pressure and temperature Sodium Citrate pH 6.0 was used for antigen retrieval.