

Product Name: Profilin 1 Rabbit Monoclonal Antibody**Catalog #: AMRe01506**

For research use only.

Summary

Description	Recombinant rabbit monoclonal antibody
Host	Rabbit
Application	WB,IHC,ICC/IF,IP
Reactivity	Human,Mouse,Rat
Conjugation	Unconjugated
Modification	Unmodified
Isotype	IgG
Clonality	Monoclonal
Form	Liquid
Concentration	0.54mg/ml. The concentration of this product may be batch-dependent.
Storage	Aliquot and store at -20°C (valid for 12 months). Avoid freeze/thaw cycles.
Shipping	Ice bags
Buffer	50mM Tris-Glycine(pH 7.4), 0.15M NaCl, 40% Glycerol, 0.01% Sodium azide and 0.05% protective protein
Purification	Affinity Purification

Application

Dilution Ratio	WB 1:500-1:1000,IHC 1:50-1:100,ICC/IF 1:50-1:200,IP 1:20-1:50
Molecular Weight	Calculated MW: 15 kDa; Observed MW: 15 kDa

Antigen Information

Gene Name	PFN1
Alternative Names	Epididymis tissue protein Li 184a; Profilin I
Gene ID	5216
SwissProt ID	P07737
Immunogen	A synthetic peptide of human Profilin 1

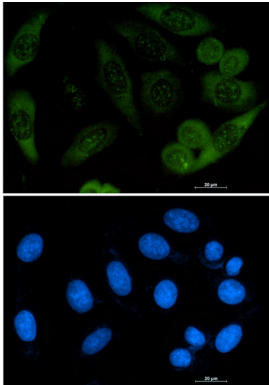
Background

Binds to actin and affects the structure of the cytoskeleton. At high concentrations, profilin prevents the polymerization of actin, whereas it enhances it at low concentrations. By binding to PIP2, it inhibits the formation of IP3 and DG.

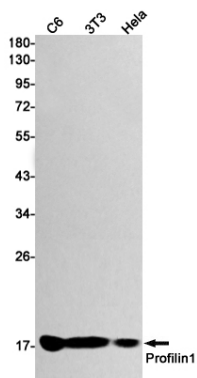
Research Area

Tags & Cell Markers

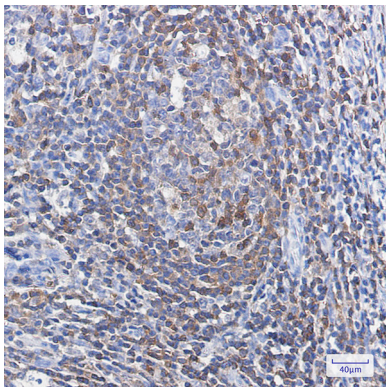
Image Data



Immunocytochemistry analysis of Profilin 1 (green) in A549 using Profilin 1 antibody, and DAPI (blue).



Western blot analysis of Profilin 1 in C6, 3T3, HeLa lysates using Profilin 1 antibody.



Immunohistochemistry analysis of paraffin-embedded Human tonsil using Profilin 1 antibody. High-pressure and temperature Sodium Citrate pH 6.0 was used for antigen retrieval.