

Product Name: Smad3 Rabbit Monoclonal Antibody**Catalog #: AMRe01502**

For research use only.

Summary

Description	Recombinant rabbit monoclonal antibody
Host	Rabbit
Application	WB,IHC,ICC/IF
Reactivity	Human,Rat
Conjugation	Unconjugated
Modification	Unmodified
Isotype	IgG
Clonality	Monoclonal
Form	Liquid
Concentration	0.54mg/ml. The concentration of this product may be batch-dependent.
Storage	Aliquot and store at -20°C (valid for 12 months). Avoid freeze/thaw cycles.
Shipping	Ice bags
Buffer	50mM Tris-Glycine(pH 7.4), 0.15M NaCl, 40% Glycerol, 0.01% Sodium azide and 0.05% protective protein
Purification	Affinity Purification

Application

Dilution Ratio	WB 1:500-1:1000,IHC 1:50-1:100,ICC/IF 1:50-1:200
Molecular Weight	Calculated MW: 48 kDa; Observed MW: 52 kDa

Antigen Information

Gene Name	SMAD3 SMAD3; MADH3; Mothers against decapentaplegic homolog 3; MAD homolog 3; Mad3;
Alternative Names	Mothers against DPP homolog 3; hMAD-3; JV15-2; SMAD family member 3; SMAD 3; Smad3; hSMAD3
Gene ID	4088
SwissProt ID	P84022
Immunogen	A synthetic peptide corresponding to target protein

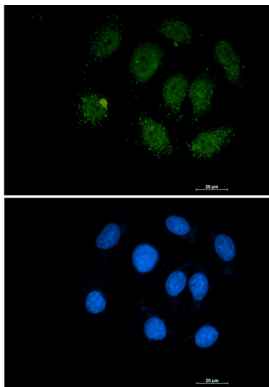
Background

Smad3 transcription factor phosphorylated and activated by TGF-beta-type receptors. A receptor-regulated Smad (R-smad). Binds directly to consensus DNA-binding elements in the promoters of target genes. In mouse required for establishment of the mucosal immune response and proper development of skeleton.

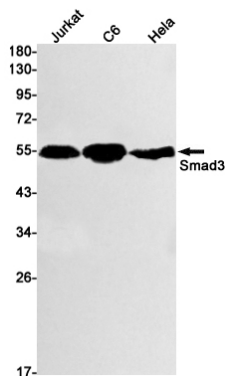
Research Area

Signal Transduction

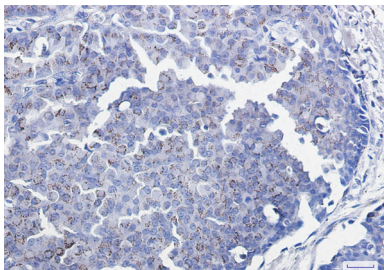
Image Data



Immunocytochemistry analysis of Smad3 (green) in A549 using Smad3 antibody, and DAPI (blue).



Western blot analysis of Smad3 in Jurkat, C6, HeLa lysates using Smad3 antibody.



Immunohistochemistry analysis of paraffin-embedded Human breast cancer tissue using Smad3 antibody. High-pressure and temperature Sodium Citrate pH 6.0 was used for antigen retrieval.