

**Product Name: CD90 Rabbit Monoclonal Antibody**  
**Catalog #: AMRe01496**



## Summary

<b>Production Name</b>	CD90 Rabbit Monoclonal Antibody
<b>Description</b>	Rabbit Monoclonal antibody
<b>Host</b>	Rabbit
<b>Application</b>	WB,IHC-P
<b>Reactivity</b>	Rat

## Performance

<b>Conjugation</b>	Unconjugated
<b>Modification</b>	Unmodified
<b>Isotype</b>	IgG
<b>Clonality</b>	Monoclonal
<b>Form</b>	Liquid
<b>Storage</b>	Store at 4°C short term. Aliquot and store at -20°C long term. Avoid freeze/thaw cycles.
<b>Buffer</b>	50mM Tris-Glycine(pH 7.4), 0.15M NaCl, 40% Glycerol, 0.01% Sodium azide and 0.05% protective protein
<b>Purification</b>	Affinity Purification

## Immunogen

<b>Gene Name</b>	THY1
<b>Alternative Names</b>	THY1; Thy-1 membrane glycoprotein; CDw90; Thy-1 antigen; CD antigen CD90
<b>Gene ID</b>	7070
<b>SwissProt ID</b>	P04216.

## Application

<b>Dilution Ratio</b>	WB: 1:500-1:1000 IHC: 1:50-1:100
<b>Molecular Weight</b>	Calculated MW: 18 kDa; Observed MW: 22 kDa

## Background

Thy1 is a GPI-anchored, developmentally regulated protein involved in various signaling cascades that mediate neurite

**Product Name: CD90 Rabbit Monoclonal Antibody**  
**Catalog #: AMRe01496**

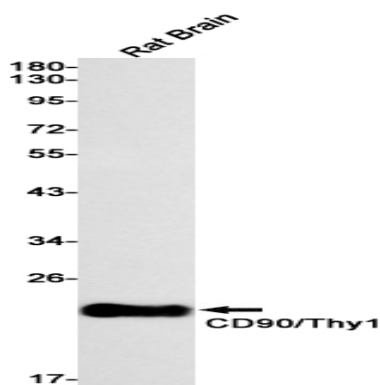


outgrowth, T cell activation, tumor suppression, apoptosis, and fibrosis. It is highly expressed on the surface of adult neurons and is thought to play a role in modulating adhesive and migratory events, such as neurite extension.

## Research Area

Immunology

## Image Data



Western blot analysis of CD90/Thy1 in rat Brain lysates using CD90 antibody.

## Note

For research use only.