

Product Name: MLH1 Rabbit Monoclonal antibody**Catalog #: AMRe01485**

For research use only.

Summary

Description	Recombinant rabbit monoclonal antibody
Host	Rabbit
Application	WB,ICC/IF,IP
Reactivity	Human,Mouse,Rat
Conjugation	Unconjugated
Modification	Unmodified
Isotype	IgG
Clonality	Monoclonal Antibody
Form	Liquid
Concentration	0.37mg/ml. The concentration of this product may be batch-dependent.
Storage	Aliquot and store at -20°C (valid for 12 months). Avoid freeze/thaw cycles.
Shipping	Ice bags
Buffer	50mM Tris-Glycine(pH 7.4), 0.15M NaCl, 40% Glycerol, 0.01% Sodium azide and 0.05% protective protein
Purification	Affinity Purified

Application

Dilution Ratio	WB 1:500-1:1000,ICC/IF 1:50-1:200,IP 1:20-1:50
Molecular Weight	Calculated MW: 85 kDa; Observed MW: 85 kDa

Antigen Information

Gene Name	MLH1
Alternative Names	MLH1; COCA2; DNA mismatch repair protein Mlh1; MutL protein homolog 1
Gene ID	4292
SwissProt ID	P40692
Immunogen	A synthetic peptide of human MLH1

Background

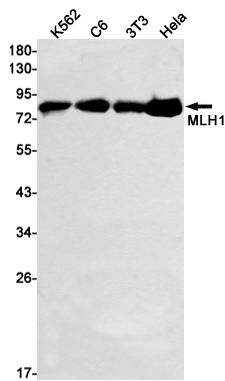
This gene was identified as a locus frequently mutated in hereditary nonpolyposis colon cancer (HNPCC). It is a human homolog of the E. coli DNA mismatch repair gene mutL, consistent with the characteristic alterations in microsatellite

sequences (RER+ phenotype) found in HNPCC. Alternatively spliced transcript variants encoding different isoforms have been described, but their full-length natures have not been determined.

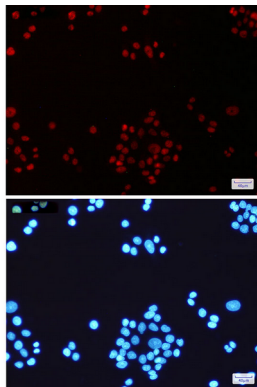
Research Area

Epigenetics and Nuclear Signaling

Image Data



Western blot analysis of MLH1 in K562, C6, 3T3, HeLa lysates using MLH1 antibody.



Immunocytochemistry analysis of MLH1(green) in HeLa using MLH1 antibody, and DAPI(blue)