

**Product Name: MSH6 Rabbit Monoclonal Antibody****Catalog #: AMRe01484**

For research use only.

**Summary**

<b>Description</b>	Recombinant rabbit monoclonal antibody
<b>Host</b>	Rabbit
<b>Application</b>	WB,IHC,ICC/IF
<b>Reactivity</b>	Human,Mouse,Rat
<b>Conjugation</b>	Unconjugated
<b>Modification</b>	Unmodified
<b>Isotype</b>	IgG
<b>Clonality</b>	Monoclonal
<b>Form</b>	Liquid
<b>Concentration</b>	0.61mg/ml. The concentration of this product may be batch-dependent.
<b>Storage</b>	Aliquot and store at -20°C (valid for 12 months). Avoid freeze/thaw cycles.
<b>Shipping</b>	Ice bags
<b>Buffer</b>	50mM Tris-Glycine(pH 7.4), 0.15M NaCl, 40% Glycerol, 0.01% Sodium azide and 0.05% protective protein
<b>Purification</b>	Affinity Purification

**Application**

<b>Dilution Ratio</b>	WB 1:500-1:1000,IHC 1:50-1:100,ICC/IF 1:50-1:200
<b>Molecular Weight</b>	Calculated MW: 153 kDa; Observed MW: 163 kDa

**Antigen Information**

<b>Gene Name</b>	MSH6
<b>Alternative Names</b>	MSH6; GTBP; DNA mismatch repair protein Msh6; hMSH6; G/T mismatch-binding protein; GTBP; GTMBP; MutS-alpha 160 kDa subunit; p160
<b>Gene ID</b>	2956
<b>SwissProt ID</b>	P52701
<b>Immunogen</b>	A synthetic peptide of human MSH6

**Background**

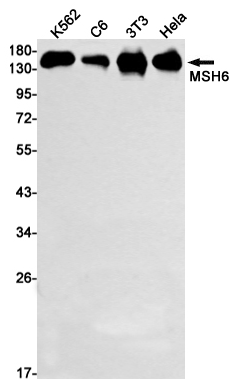
The DNA mismatch repair system (MMR) repairs post-replication DNA, inhibits recombination between nonidentical DNA

sequences, and induces both checkpoint and apoptotic responses following certain types of DNA damage. MSH2 (MutS homologue 2) forms the hMutS- $\alpha$  dimer with MSH6 and is an essential component of the mismatch repair process.

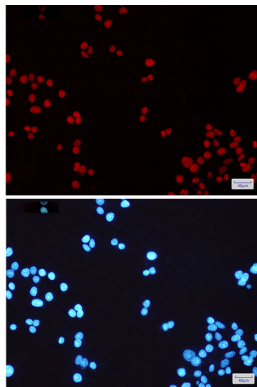
## Research Area

Epigenetics and Nuclear Signaling

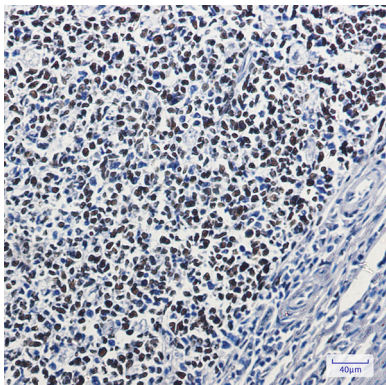
## Image Data



Western blot analysis of MSH6 in K562, C6, 3T3, HeLa lysates using MSH6 antibody.



Immunocytochemistry analysis of MSH6(green) in HeLa using MSH6 antibody, and DAPI(blue)



Immunohistochemistry analysis of paraffin-embedded Human tonsil using MSH6 antibody. High-pressure and temperature Sodium Citrate pH 6.0 was used for antigen retrieval.