

Product Name: SATB2 Rabbit Monoclonal Antibody
Catalog #: AMRe01482



Summary

| | |
|------------------------|----------------------------------|
| Production Name | SATB2 Rabbit Monoclonal Antibody |
| Description | Rabbit Monoclonal antibody |
| Host | Rabbit |
| Application | WB |
| Reactivity | Rat |

Performance

| | |
|---------------------|--|
| Conjugation | Unconjugated |
| Modification | Unmodified |
| Isotype | IgG |
| Clonality | Monoclonal |
| Form | Liquid |
| Storage | Store at 4°C short term. Aliquot and store at -20°C long term. Avoid freeze/thaw cycles. |
| Buffer | 50mM Tris-Glycine(pH 7.4), 0.15M NaCl, 40% Glycerol, 0.01% Sodium azide and 0.05% protective protein |
| Purification | Affinity Purification |

Immunogen

| | |
|--------------------------|--|
| Gene Name | SATB2 |
| Alternative Names | GLSS; SATB family member 2; SATB homeobox 2; SATB2; Special AT rich sequence binding protein 2 |
| Gene ID | 23314 |
| SwissProt ID | Q9UPW6. |

Application

| | |
|-------------------------|--|
| Dilution Ratio | WB: 1:500-1:1000 |
| Molecular Weight | Calculated MW: 83 kDa; Observed MW: 83 kDa |

Background

Product Name: SATB2 Rabbit Monoclonal Antibody
Catalog #: AMRe01482

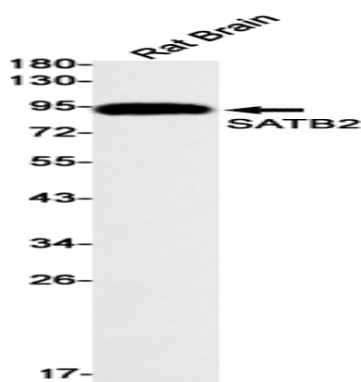


Binds to DNA, at nuclear matrix- or scaffold-associated regions. Thought to recognize the sugar-phosphate structure of double-stranded DNA. Transcription factor controlling nuclear gene expression, by binding to matrix attachment regions (MARs) of DNA and inducing a local chromatin-loop remodeling. Acts as a docking site for several chromatin remodeling enzymes and also by recruiting corepressors (HDACs) or coactivators (HATs) directly to promoters and enhancers.

Research Area

Neuroscience

Image Data



Western blot analysis of SATB2 in rat Brain lysates using SATB2 antibody.

Note

For research use only.