

**Product Name: ALDH1A1 Rabbit Monoclonal Antibody**  
**Catalog #: AMRe01481**



## Summary

<b>Production Name</b>	ALDH1A1 Rabbit Monoclonal Antibody
<b>Description</b>	Rabbit Monoclonal antibody
<b>Host</b>	Rabbit
<b>Application</b>	WB,IHC-P,IP
<b>Reactivity</b>	Human,Mouse

## Performance

<b>Conjugation</b>	Unconjugated
<b>Modification</b>	Unmodified
<b>Isotype</b>	IgG
<b>Clonality</b>	Monoclonal
<b>Form</b>	Liquid
<b>Storage</b>	Store at 4°C short term. Aliquot and store at -20°C long term. Avoid freeze/thaw cycles.
<b>Buffer</b>	50mM Tris-Glycine(pH 7.4), 0.15M NaCl, 40% Glycerol, 0.01% Sodium azide and 0.05% protective protein
<b>Purification</b>	Affinity Purification

## Immunogen

<b>Gene Name</b>	ALDH1A1
<b>Alternative Names</b>	ALDH1A1; ALDC; ALDH1; PUMB1; Retinal dehydrogenase 1; RALDH 1; RaLDH1; ALDH-E1; ALHDII; Aldehyde dehydrogenase family 1 member A1; Aldehyde dehydrogenase; cytosolic
<b>Gene ID</b>	216
<b>SwissProt ID</b>	P00352.

## Application

<b>Dilution Ratio</b>	WB: 1:500-1:1000 IHC: 1:50-1:100 IP: 1:20
<b>Molecular Weight</b>	Calculated MW: 55 kDa; Observed MW: 55 kDa

**Product Name: ALDH1A1 Rabbit Monoclonal Antibody**  
**Catalog #: AMRe01481**



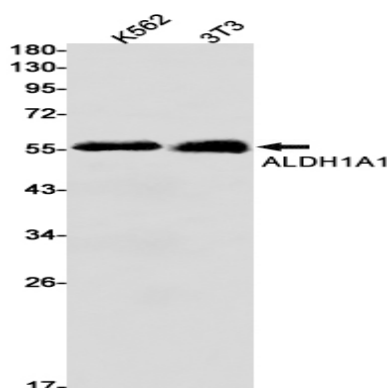
## Background

ALDH1A1 is a liver cytosolic isoform of acetaldehyde dehydrogenase and is involved in the major pathway of alcohol metabolism along with alcohol dehydrogenase. ALDH1A1 is also known as retinal dehydrogenase 1 and is involved in retinol metabolism, converting retinol to retinoic acid.

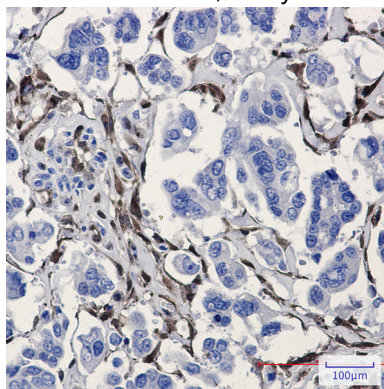
## Research Area

Neuroscience

## Image Data



Western blot analysis of ALDH1A1 in K562, 3T3 lysates using ALDH1A1 antibody.



Immunohistochemistry analysis of paraffin-embedded Human Cholangiocarcinoma using ALDH1A1 antibody. High-pressure and temperature Sodium Citrate pH 6.0 was used for antigen retrieval.

## Note

For research use only.