

Product Name: ATM Rabbit Monoclonal Antibody**Catalog #: AMRe01480**

For research use only.

Summary

Description	Recombinant rabbit monoclonal antibody
Host	Rabbit
Application	WB, ICC/IF
Reactivity	Human
Conjugation	Unconjugated
Modification	Unmodified
Isotype	IgG
Clonality	Monoclonal
Form	Liquid
Concentration	0.3mg/ml. The concentration of this product may be batch-dependent.
Storage	Aliquot and store at -20°C (valid for 12 months). Avoid freeze/thaw cycles.
Shipping	Ice bags
Buffer	50mM Tris-Glycine(pH 7.4), 0.15M NaCl, 40% Glycerol, 0.01% Sodium azide and 0.05% protective protein
Purification	Affinity Purification

Application

Dilution Ratio	WB 1:500-1:1000, ICC/IF 1:50-1:200
Molecular Weight	Calculated MW: 351 kDa; Observed MW: 351 kDa

Antigen Information

Gene Name	ATM
Alternative Names	ATM; Serine-protein kinase ATM; Ataxia telangiectasia mutated; A-T mutated
Gene ID	472
SwissProt ID	Q13315
Immunogen	A synthetic peptide corresponding to target protein

Background

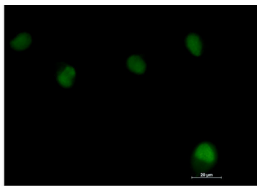
The protein encoded by this gene belongs to the PI3/PI4-kinase family. This protein is an important cell cycle checkpoint kinase that phosphorylates; thus, it functions as a regulator of a wide variety of downstream proteins, including tumor suppressor

proteins p53 and BRCA1, checkpoint kinase CHK2, checkpoint proteins RAD17 and RAD9, and DNA repair protein NBS1. This protein and the closely related kinase ATR are thought to be master controllers of cell cycle checkpoint signaling pathways that are required for cell response to DNA damage and for genome stability.

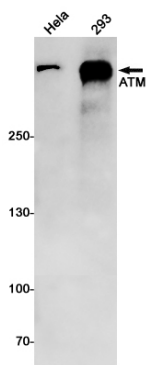
Research Area

Epigenetics and Nuclear Signaling

Image Data



Immunocytochemistry analysis of ATM (green) in HT-1080 using ATM antibody, and DAPI (blue).



Western blot analysis of ATM in HeLa, 293 lysates using ATM antibody.