
Product Name: SLP2 Rabbit Monoclonal Antibody**Catalog #: AMRe01468**

For research use only.

Summary

Description	Recombinant rabbit monoclonal antibody
Host	Rabbit
Application	WB,ICC/IF,IP
Reactivity	Human,Mouse,Rat
Conjugation	Unconjugated
Modification	Unmodified
Isotype	IgG
Clonality	Monoclonal
Form	Liquid
Concentration	0.68mg/ml. The concentration of this product may be batch-dependent.
Storage	Aliquot and store at -20°C (valid for 12 months). Avoid freeze/thaw cycles.
Shipping	Ice bags
Buffer	50mM Tris-Glycine(pH 7.4), 0.15M NaCl, 40% Glycerol, 0.01% Sodium azide and 0.05% protective protein
Purification	Affinity Purification

Application

Dilution Ratio	WB 1:500-1:1000,ICC/IF 1:50-1:200,IP 1:20-1:50
Molecular Weight	Calculated MW: 39 kDa; Observed MW: 39 kDa

Antigen Information

Gene Name	STOML2
Alternative Names	stomatin like 2; SLP-2; HSPC108
Gene ID	30968
SwissProt ID	Q9UJZ1
Immunogen	A synthetic peptide of human STOML2

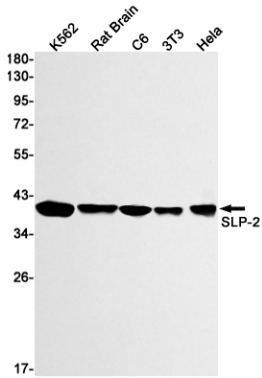
Background

Mitochondrial protein that probably regulates the biogenesis and the activity of mitochondria.

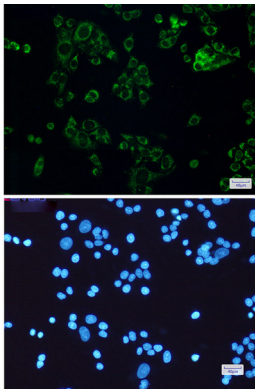
Research Area

Cancer

Image Data



Western blot analysis of SLP2 in K562, rat Brain, C6, 3T3, HeLa lysates using SLP2 antibody.



Immunocytochemistry analysis of SLP2(green) in HeLa using SLP2 antibody, and DAPI(blue)