
Product Name: Fructose 6 Phosphate Kinase Rabbit Monoclonal Antibody**Catalog #: AMRe01466**

For research use only.

Summary

Description	Recombinant rabbit monoclonal antibody
Host	Rabbit
Application	WB,ICC/IF
Reactivity	Human,Mouse,Rat
Conjugation	Unconjugated
Modification	Unmodified
Isotype	IgG
Clonality	Monoclonal
Form	Liquid
Concentration	0.64mg/ml. The concentration of this product may be batch-dependent.
Storage	Aliquot and store at -20°C (valid for 12 months). Avoid freeze/thaw cycles.
Shipping	Ice bags
Buffer	50mM Tris-Glycine(pH 7.4), 0.15M NaCl, 40% Glycerol, 0.01% Sodium azide and 0.05% protective protein
Purification	Affinity Purification

Application

Dilution Ratio	WB 1:500-1:1000,ICC/IF 1:50-1:200
Molecular Weight	Calculated MW: 85 kDa; Observed MW: 85 kDa

Antigen Information

Gene Name	PFKM
Alternative Names	GSD7; PFK1; PFKA; PFKX; PFK-1; Phosphohexokinase
Gene ID	5213
SwissProt ID	P08237
Immunogen	A synthetic peptide of human Fructose 6 Phosphate Kinase

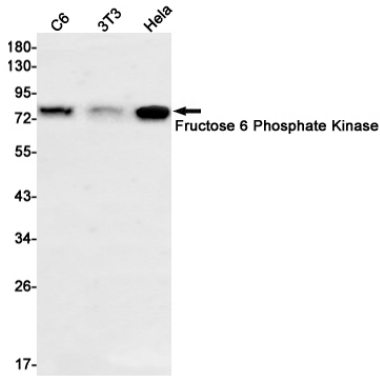
Background

Carbohydrate degradation; glycolysis; D-glyceraldehyde 3-phosphate and glycerone phosphate from D-glucose: step 3/4.

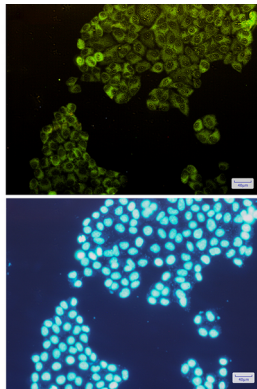
Research Area

Signal Transduction

Image Data



Western blot analysis of Fructose 6 Phosphate Kinase in C6, 3T3, HeLa lysates using Fructose 6 Phosphate Kinase antibody.



Immunocytochemistry analysis of Fructose 6 Phosphate Kinase(green) in HeLa using Fructose 6 Phosphate Kinase antibody, and DAPI(blue)