

Product Name: ABCE1 Rabbit Monoclonal antibody
Catalog #: AMRe01460



Summary

| | |
|------------------------|--|
| Production Name | ABCE1 Rabbit Monoclonal antibody |
| Description | Recombinant Rabbit Monoclonal antibody |
| Host | Rabbit |
| Application | WB,IP |
| Reactivity | Human,Mouse,Rat |

Performance

| | |
|---------------------|--|
| Conjugation | Unconjugated |
| Modification | Unmodified |
| Isotype | IgG |
| Clonality | Monoclonal Antibody |
| Form | Liquid |
| Storage | Store at 4°C short term. Aliquot and store at -20°C long term. Avoid freeze/thaw cycles. |
| Buffer | 50mM Tris-Glycine(pH 7.4), 0.15M NaCl, 40% Glycerol, 0.01% Sodium azide and 0.05% protective protein |
| Purification | Affinity Purified |

Immunogen

| | |
|--------------------------|--|
| Gene Name | ABCE1 |
| Alternative Names | ABC38; ABCE1; HuHP68; OABP; RLI; RNASEL1; RNASELI; RNS4I |
| Gene ID | 6059 |
| SwissProt ID | P61221. |

Application

| | |
|-------------------------|--|
| Dilution Ratio | WB: 1:500-1:1000 IP: 1:20 |
| Molecular Weight | Calculated MW: 67 kDa; Observed MW: 67 kDa |

Background

Antagonizes the binding of 2-5A (5'-phosphorylated 2',5'-linked oligoadenylates) by RNase L through direct interaction

Product Name: ABCE1 Rabbit Monoclonal antibody
Catalog #: AMRe01460

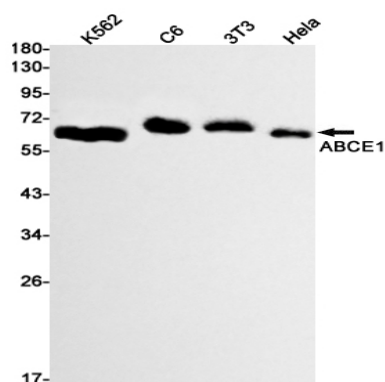


with RNase L and therefore inhibits its endoribonuclease activity.

Research Area

Signal Transduction

Image Data



Western blot analysis of ABCE1 in K562, C6, 3T3, HeLa lysates using ABCE1 antibody.

Note

For research use only.