
Product Name: P2Y6 Rabbit Monoclonal antibody**Catalog #: AMRe01456**

For research use only.

Summary

Description	Recombinant rabbit monoclonal antibody
Host	Rabbit
Application	WB,IHC,ICC/IF,IP
Reactivity	Human
Conjugation	Unconjugated
Modification	Unmodified
Isotype	IgG
Clonality	Monoclonal Antibody
Form	Liquid
Concentration	0.5mg/ml. The concentration of this product may be batch-dependent.
Storage	Aliquot and store at -20°C (valid for 12 months). Avoid freeze/thaw cycles.
Shipping	Ice bags
Buffer	50mM Tris-Glycine(pH 7.4), 0.15M NaCl, 40% Glycerol, 0.01% Sodium azide and 0.05% protective protein
Purification	Affinity Purified

Application

Dilution Ratio	WB 1:500-1:1000,IHC 1:50-1:100,ICC/IF 1:50-1:200,IP 1:20-1:50
Molecular Weight	Calculated MW: 36 kDa; Observed MW: 36 kDa

Antigen Information

Gene Name	P2RY6
Alternative Names	P2ry6; P2Y6; P2Y6 receptor; PP2891
Gene ID	5031
SwissProt ID	Q15077
Immunogen	A synthetic peptide of human P2Y6

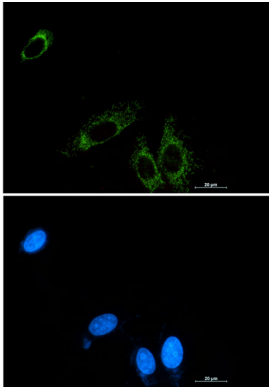
Background

Receptor for extracellular UDP > UTP > ATP. The activity of this receptor is mediated by G proteins which activate a phosphatidylinositol-calcium second messenger system.

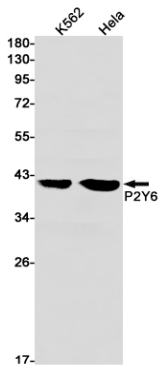
Research Area

Signal Transduction

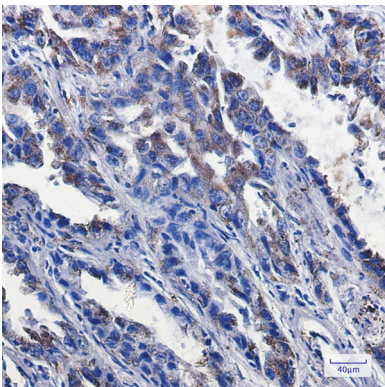
Image Data



Immunocytochemistry analysis of P2Y6 (green) in A549 using P2Y6 antibody, and DAPI (blue).



Western blot analysis of P2Y6 in K562, HeLa lysates using P2Y6 antibody.



Immunohistochemistry analysis of paraffin-embedded Human lung cancer tissue using P2Y6 antibody. High-pressure and temperature Sodium Citrate pH 6.0 was used for antigen retrieval.