

**Product Name: GATA1 Rabbit Monoclonal Antibody****Catalog #: AMRe01419**

For research use only.

**Summary**

<b>Description</b>	Recombinant rabbit monoclonal antibody
<b>Host</b>	Rabbit
<b>Application</b>	WB,ICC/IF,IP,ChIP
<b>Reactivity</b>	Human
<b>Conjugation</b>	Unconjugated
<b>Modification</b>	Unmodified
<b>Isotype</b>	IgG
<b>Clonality</b>	Monoclonal
<b>Form</b>	Liquid
<b>Concentration</b>	0.64mg/ml. The concentration of this product may be batch-dependent.
<b>Storage</b>	Aliquot and store at -20°C (valid for 12 months). Avoid freeze/thaw cycles.
<b>Shipping</b>	Ice bags
<b>Buffer</b>	50mM Tris-Glycine(pH 7.4), 0.15M NaCl, 40% Glycerol, 0.01% Sodium azide and 0.05% protective protein
<b>Purification</b>	Affinity Purification

**Application**

<b>Dilution Ratio</b>	WB 1:500-1:1000,ICC/IF 1:50-1:200,IP 1:20-1:50,ChIP 1:20
<b>Molecular Weight</b>	Calculated MW: 43 kDa; Observed MW: 43 kDa

**Antigen Information**

<b>Gene Name</b>	GATA1
<b>Alternative Names</b>	GATA1; ERYF1; GF1; Erythroid transcription factor; Eryf1; GATA-binding factor 1; GATA-1; GF-1; NF-E1 DNA-binding protein
<b>Gene ID</b>	2623
<b>SwissProt ID</b>	P15976
<b>Immunogen</b>	Recombinant protein of human GATA1

**Background**

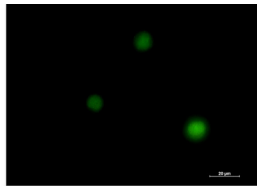
GATA-1 is the founding member of the GATA family and is required for erythroid and megakaryocytic cell development.

Mutations in GATA-1 have been linked to many human diseases, including acute megakaryoblastic leukemia in Down syndrome children (DS-AMKL), X-linked thrombocytopenia, and gray platelet syndrome.

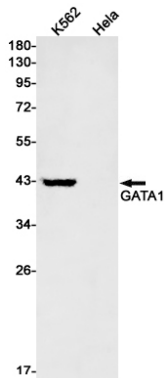
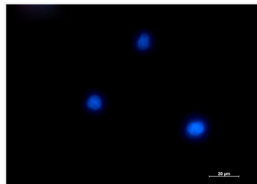
## Research Area

Epigenetics and Nuclear Signaling

## Image Data



Immunocytochemistry analysis of GATA1 (green) in K562 using GATA1 antibody, and DAPI(blue).



Western blot analysis of GATA1 in K562, HeLa lysates using GATA1 antibody.