

Product Name: Doublecortin Rabbit Monoclonal Antibody
Catalog #: AMRe01412

Summary

Production Name	Doublecortin Rabbit Monoclonal Antibody
Description	Rabbit Monoclonal antibody
Host	Rabbit
Application	WB
Reactivity	Rat

Performance

Conjugation	Unconjugated
Modification	Unmodified
Isotype	IgG
Clonality	Monoclonal
Form	Liquid
Storage	Store at 4°C short term. Aliquot and store at -20°C long term. Avoid freeze/thaw cycles.
Buffer	50mM Tris-Glycine(pH 7.4), 0.15M NaCl, 40% Glycerol, 0.01% Sodium azide and 0.05% protective protein
Purification	Affinity Purification

Immunogen

Gene Name	DCX
Alternative Names	DCX; DBCN; LISX; Neuronal migration protein doublecortin; Dublin; Lissencephalin-X; Lis-X
Gene ID	1641
SwissProt ID	O43602.

Application

Dilution Ratio	WB: 1:500-1:1000
Molecular Weight	Calculated MW: 41 kDa; Observed MW: 41 kDa

Product Name: Doublecortin Rabbit Monoclonal Antibody
Catalog #: AMRe01412

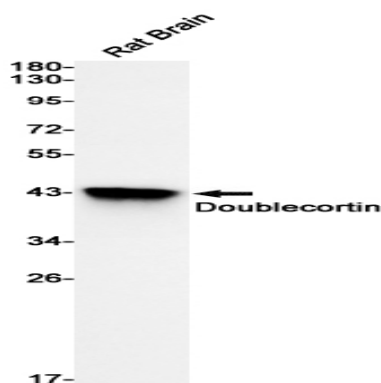
Background

Mutations in Doublecortin cause Lissencephaly (smooth brain), a neuronal migration disorder characterized by epilepsy and mental retardation. Doublecortin is a microtubule associated protein that stabilizes and bundles microtubules. A conserved doublecortin domain mediates the interaction with microtubules, and interestingly most missense mutations cluster in this domain.

Research Area

Cell Biology

Image Data



Western blot analysis of Doublecortin in rat Brain lysates using Doublecortin antibody.

Note

For research use only.