
Product Name: Caspase 6 Rabbit Monoclonal Antibody**Catalog #: AMRe01406**

For research use only.

Summary

Description	Recombinant rabbit monoclonal antibody
Host	Rabbit
Application	WB
Reactivity	Human,Rat
Conjugation	Unconjugated
Modification	Unmodified
Isotype	IgG
Clonality	Monoclonal
Form	Liquid
Concentration	0.5mg/ml. The concentration of this product may be batch-dependent.
Storage	Aliquot and store at -20°C (valid for 12 months). Avoid freeze/thaw cycles.
Shipping	Ice bags
Buffer	50mM Tris-Glycine(pH 7.4), 0.15M NaCl, 40% Glycerol, 0.01% Sodium azide and 0.05% protective protein
Purification	Affinity Purification

Application

Dilution Ratio	WB 1:500-1:1000
Molecular Weight	Calculated MW: 33 kDa; Observed MW: 11,33 kDa

Antigen Information

Gene Name	CASP6
Alternative Names	CASP6; MCH2; Caspase-6; CASP-6; Apoptotic protease Mch-2
Gene ID	839
SwissProt ID	P55212
Immunogen	A synthetic peptide of human Caspase-6

Background

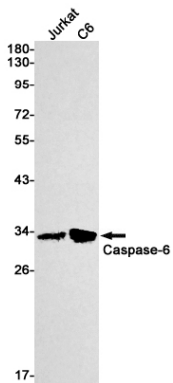
Caspase-6 (Mch2) is one of the major executioner caspases functioning in cellular apoptotic processes. Upon apoptotic stimulation, initiator caspases such as caspase-9 are cleaved and activated. The activated upstream caspases further process

downstream executioner caspases, such as caspase-3 and caspase-6, by cleaving them into large and small subunits, thereby initiating a caspase cascade leading to apoptosis. One of the major targets for caspase-6 is the membrane associated protein lamin A.

Research Area

Cell Biology

Image Data



Western blot analysis of Caspase6 in Jurkat, C6 lysates using Caspase 6 antibody.