

**Product Name: ZnT-8 Rabbit Polyclonal Antibody****Catalog #: APRab20301**

For research use only.

**Summary**

<b>Description</b>	Rabbit polyclonal Antibody
<b>Host</b>	Rabbit
<b>Application</b>	WB,ELISA
<b>Reactivity</b>	Human,Rat,Mouse
<b>Conjugation</b>	Unconjugated
<b>Modification</b>	Unmodified
<b>Isotype</b>	IgG
<b>Clonality</b>	Polyclonal
<b>Form</b>	Liquid
<b>Concentration</b>	1mg/ml
<b>Storage</b>	Aliquot and store at -20°C (valid for 12 months). Avoid freeze/thaw cycles.
<b>Shipping</b>	Ice bags
<b>Buffer</b>	Liquid in PBS containing 50% glycerol, 0.5% protective protein and 0.02% New type preservative N.
<b>Purification</b>	Affinity purification

**Application**

<b>Dilution Ratio</b>	WB 1:500-1:2000,ELISA 1:5000-1:20000
<b>Molecular Weight</b>	41kDa

**Antigen Information**

<b>Gene Name</b>	SLC30A8
<b>Alternative Names</b>	SLC30A8; ZNT8; Zinc transporter 8; ZnT-8; Solute carrier family 30 member 8
<b>Gene ID</b>	169026.0
<b>SwissProt ID</b>	Q8IWU4
<b>Immunogen</b>	The antiserum was produced against synthesized peptide derived from human SLC30A8. AA range:171-220

**Background**

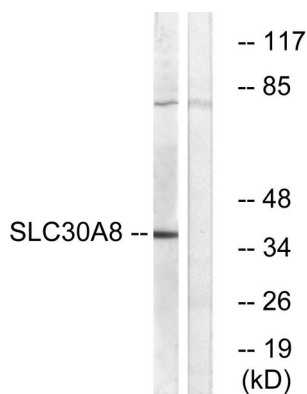
The protein encoded by this gene is a zinc efflux transporter involved in the accumulation of zinc in intracellular vesicles. This

gene is expressed at a high level only in the pancreas, particularly in islets of Langerhans. The encoded protein colocalizes with insulin in the secretory pathway granules of the insulin-secreting INS-1 cells. Allelic variants of this gene exist that confer susceptibility to diabetes mellitus, noninsulin-dependent (NIDDM). Several transcript variants encoding different isoforms have been found for this gene.[provided by RefSeq, Mar 2010],domain:Contains a histidine-rich region, HXXXXXHNH-motif, which is a ligand for zinc.,function:Facilitates the accumulation of zinc from the cytoplasm into intracellular vesicles, being a zinc-efflux transporter. May be a major component for providing zinc to insulin maturation and/or storage processes in insulin-secreting pancreatic beta-cells.,polymorphism:Variant Trp-325 is a risk factor that confers susceptibility to diabetes mellitus, noninsulin-dependent (NIDDM) [MIM:125853].,similarity:Belongs to the cation diffusion facilitator (CDF) transporter (TC 2.A.4) family. SLC30A subfamily.,subcellular location:Strictly associated with the insulin granule secretory.,tissue specificity:Strictly restricted to the pancreas islets cells. Found in insulin-producing beta cells and colocalized with insulin.,

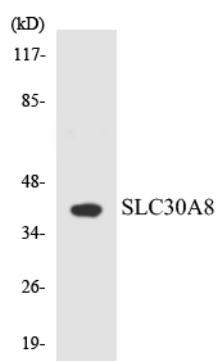
## Research Area

Signal Transduction; Metabolism; Vitamins / Minerals

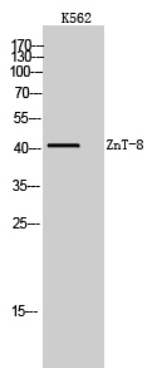
## Image Data



Western blot analysis of lysates from K562 cells, using SLC30A8 Antibody. The lane on the right is blocked with the synthesized peptide.



Western blot analysis of the lysates from HeLa cells using SLC30A8 antibody.



Western Blot analysis of K562 cells using ZnT-8 Polyclonal Antibody. Secondary antibody was diluted at 1:20000