
Product Name: ZnT-4 Rabbit Polyclonal Antibody**Catalog #: APRab20298**

For research use only.

Summary

Description	Rabbit polyclonal Antibody
Host	Rabbit
Application	WB,IHC,ICC/IF,ELISA
Reactivity	Human,Mouse,Rat
Conjugation	Unconjugated
Modification	Unmodified
Isotype	IgG
Clonality	Polyclonal
Form	Liquid
Concentration	1mg/ml
Storage	Aliquot and store at -20°C (valid for 12 months). Avoid freeze/thaw cycles.
Shipping	Ice bags
Buffer	Liquid in PBS containing 50% glycerol, 0.5% protective protein and 0.02% New type preservative N.
Purification	Affinity purification

Application

Dilution Ratio	WB 1:500-1:2000,IHC 1:100-1:300,ICC/IF 1:50-1:200,ELISA 1:5000-1:10000
Molecular Weight	47kDa

Antigen Information

Gene Name	SLC30A4
Alternative Names	SLC30A4; ZNT4; Zinc transporter 4; ZnT-4; Solute carrier family 30 member 4
Gene ID	7782.0
SwissProt ID	O14863
Immunogen	The antiserum was produced against synthesized peptide derived from human SLC30A4. AA range:71-120

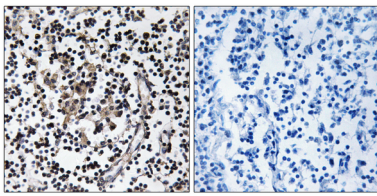
Background

Zinc is the second most abundant trace metal in the human body. It is an essential element, serving both a structural role, as in

the formation of zinc fingers in DNA-binding proteins, and a catalytic role in metalloenzymes, such as pancreatic carboxypeptidases (e.g., MIM 114852), alkaline phosphatases (e.g., MIM 171760), various dehydrogenases, and superoxide dismutases (e.g., MIM 147450). SLC30A4, or ZNT4, belongs to the ZNT family of zinc transporters. ZNTs are involved in transporting zinc out of the cytoplasm and have similar structures, consisting of 6 transmembrane domains and a histidine-rich cytoplasmic loop (Huang and Gitschier, 1997 [PubMed 9354792]).[supplied by OMIM, Mar 2008],domain:Contains a histidine-rich region which is a ligand for zinc and an aspartate-rich region which is a potential ligand for zinc.,function:Probably involved in zinc transport out of the cytoplasm, maybe by sequestration into an intracellular compartment.,similarity:Belongs to the cation diffusion facilitator (CDF) transporter (TC 2.A.4) family. SLC30A subfamily.,

Research Area

Image Data



Immunohistochemistry analysis of paraffin-embedded human lymph node tissue, using SLC30A4 Antibody. The picture on the right is blocked with the synthesized peptide.