
Product Name: ZnT-1 Rabbit Polyclonal Antibody**Catalog #: APRab20295**

For research use only.

Summary

Description	Rabbit polyclonal Antibody
Host	Rabbit
Application	WB,IHC,ICC/IF,ELISA
Reactivity	Human,Rat,Mouse
Conjugation	Unconjugated
Modification	Unmodified
Isotype	IgG
Clonality	Polyclonal
Form	Liquid
Concentration	1mg/ml
Storage	Aliquot and store at -20°C (valid for 12 months). Avoid freeze/thaw cycles.
Shipping	Ice bags
Buffer	Liquid in PBS containing 50% glycerol, 0.5% protective protein and 0.02% New type preservative N.
Purification	Affinity purification

Application

Dilution Ratio	WB 1:500-1:2000,IHC 1:100-1:300,ICC/IF 1:50-1:200,ELISA 1:5000-1:10000
Molecular Weight	55kDa

Antigen Information

Gene Name	SLC30A1
Alternative Names	SLC30A1; ZNT1; Zinc transporter 1; ZnT-1; Solute carrier family 30 member 1
Gene ID	7779.0
SwissProt ID	Q9Y6M5
Immunogen	The antiserum was produced against synthesized peptide derived from human SLC30A1. AA range:201-250

Background

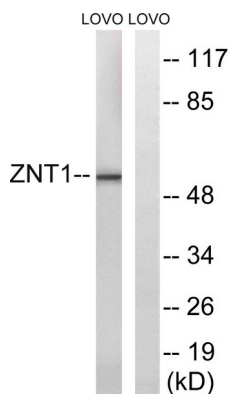
function:May be involved in zinc transport out of the cell.,similarity:Belongs to the cation diffusion facilitator (CDF) transporter

(TC 2.A.4) family. SLC30A subfamily.,subunit:Multimer.,function:May be involved in zinc transport out of the cell.,similarity:Belongs to the cation diffusion facilitator (CDF) transporter (TC 2.A.4) family. SLC30A subfamily.,subunit:Multimer.,

Research Area

Neuroscience; Neurology process; Neurodegenerative disease; Alzheimer's disease; Signal Transduction; Metabolism; Vitamins / Minerals; Developmental Biology; Post embryonic development; Aging; Metabolism; Pathways and Processes; Cofactors, Vitamins / minerals; Vitamins / minerals; Neurodegenerative disease

Image Data



Western blot analysis of lysates from LOVO cells, using SLC30A1 Antibody. The lane on the right is blocked with the synthesized peptide.