
Product Name: ZNF76 Rabbit Polyclonal Antibody**Catalog #: APRab20285**

For research use only.

Summary

Description	Rabbit polyclonal Antibody
Host	Rabbit
Application	IHC,ICC/IF,ELISA
Reactivity	Human,Rat,Mouse
Conjugation	Unconjugated
Modification	Unmodified
Isotype	IgG
Clonality	Polyclonal
Form	Liquid
Concentration	1mg/ml
Storage	Aliquot and store at -20°C (valid for 12 months). Avoid freeze/thaw cycles.
Shipping	Ice bags
Buffer	Liquid in PBS containing 50% glycerol, 0.5% protective protein and 0.02% New type preservative N.
Purification	Affinity purification

Application

Dilution Ratio IHC 1:100-1:300,ICC/IF 1:50-1:200,ELISA 1:5000-1:20000

Molecular Weight

Antigen Information

Gene Name	ZNF76
Alternative Names	ZNF76; D6S229E; ZNF523; Zinc finger protein 76; Zinc finger protein 523
Gene ID	7629.0
SwissProt ID	P36508
Immunogen	The antiserum was produced against synthesized peptide derived from human ZNF76. AA range:116-165

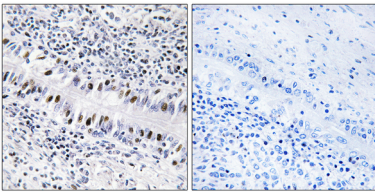
Background

function:May be involved in transcriptional regulation.,similarity:Belongs to the krueppel C2H2-type zinc-finger protein

family.,similarity:Contains 7 C2H2-type zinc fingers.,tissue specificity:Testis.,function:May be involved in transcriptional regulation.,similarity:Belongs to the krueppel C2H2-type zinc-finger protein family.,similarity:Contains 7 C2H2-type zinc fingers.,tissue specificity:Testis.,

Research Area

Image Data



Immunohistochemistry analysis of paraffin-embedded human lung carcinoma, using ZNF76 Antibody. The picture on the right is blocked with the synthesized peptide.