

---

**Product Name: ZNF600 Rabbit Polyclonal Antibody****Catalog #: APRab20275**

For research use only.

**Summary**

<b>Description</b>	Rabbit polyclonal Antibody
<b>Host</b>	Rabbit
<b>Application</b>	IHC,ICC/IF,ELISA
<b>Reactivity</b>	Human,Rat,Mouse
<b>Conjugation</b>	Unconjugated
<b>Modification</b>	Unmodified
<b>Isotype</b>	IgG
<b>Clonality</b>	Polyclonal
<b>Form</b>	Liquid
<b>Concentration</b>	1mg/ml
<b>Storage</b>	Aliquot and store at -20°C (valid for 12 months). Avoid freeze/thaw cycles.
<b>Shipping</b>	Ice bags
<b>Buffer</b>	Liquid in PBS containing 50% glycerol, 0.5% protective protein and 0.02% New type preservative N.
<b>Purification</b>	Affinity purification

**Application**

**Dilution Ratio** IHC 1:100-1:300,ICC/IF 1:50-1:200,ELISA 1:5000-1:20000

**Molecular Weight**

**Antigen Information**

<b>Gene Name</b>	ZNF600
<b>Alternative Names</b>	ZNF600; Zinc finger protein 600
<b>Gene ID</b>	162966.0
<b>SwissProt ID</b>	Q6ZNG1
<b>Immunogen</b>	The antiserum was produced against synthesized peptide derived from human ZNF600. AA range:250-300

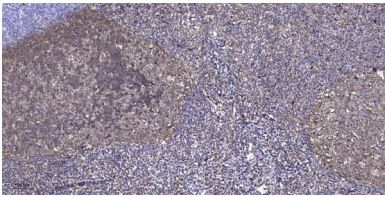
**Background**

function:May be involved in transcriptional regulation.,PTM:Phosphorylated upon DNA damage, probably by ATM or

ATR, similarity: Belongs to the krueppel C2H2-type zinc-finger protein family, similarity: Contains 20 C2H2-type zinc fingers, function: May be involved in transcriptional regulation, PTM: Phosphorylated upon DNA damage, probably by ATM or ATR, similarity: Belongs to the krueppel C2H2-type zinc-finger protein family, similarity: Contains 20 C2H2-type zinc fingers,

## Research Area

## Image Data



Immunohistochemical analysis of paraffin-embedded human tonsil. 1, Antibody was diluted at 1:200 (4° overnight) . 2, Tris-EDTA, pH9.0 was used for antigen retrieval. 3, Secondary antibody was diluted at 1:200 (room temperature, 45min) .