

---

**Product Name: ZNF460 Rabbit Polyclonal Antibody****Catalog #: APRab20268**

For research use only.

**Summary**

<b>Description</b>	Rabbit polyclonal Antibody
<b>Host</b>	Rabbit
<b>Application</b>	WB,ELISA
<b>Reactivity</b>	Human,Rat,Mouse
<b>Conjugation</b>	Unconjugated
<b>Modification</b>	Unmodified
<b>Isotype</b>	IgG
<b>Clonality</b>	Polyclonal
<b>Form</b>	Liquid
<b>Concentration</b>	1mg/ml
<b>Storage</b>	Aliquot and store at -20°C (valid for 12 months). Avoid freeze/thaw cycles.
<b>Shipping</b>	Ice bags
<b>Buffer</b>	Liquid in PBS containing 50% glycerol, 0.5% protective protein and 0.02% New type preservative N.
<b>Purification</b>	Affinity purification

**Application**

<b>Dilution Ratio</b>	WB 1:500-1:2000,ELISA 1:5000-1:20000
<b>Molecular Weight</b>	64kDa

**Antigen Information**

<b>Gene Name</b>	ZNF460
<b>Alternative Names</b>	ZNF460; ZNF272; Zinc finger protein 460; Zinc finger protein 272; Zinc finger protein HZF8
<b>Gene ID</b>	10794.0
<b>SwissProt ID</b>	Q14592
<b>Immunogen</b>	The antiserum was produced against synthesized peptide derived from human ZNF460. AA range:461-510

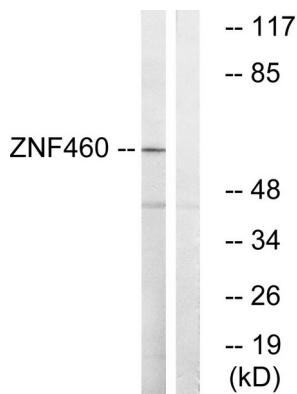
**Background**

zinc finger protein 460(ZNF460) Homo sapiens Zinc finger proteins, such as ZNF272, interact with nucleic acids and have

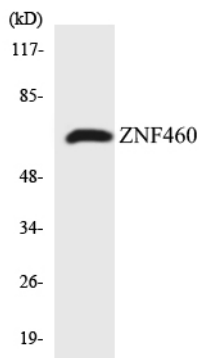
diverse functions. The zinc finger domain is a conserved amino acid sequence motif containing 2 specifically positioned cysteines and 2 histidines that are involved in coordinating zinc. Kruppel-related proteins form 1 family of zinc finger proteins. See ZFP93 (MIM 604749) for additional information on zinc finger proteins.[supplied by OMIM, May 2004],function:May be involved in transcriptional regulation.,PTM:Phosphorylated upon DNA damage, probably by ATM or ATR.,similarity:Belongs to the krueppel C2H2-type zinc-finger protein family.,similarity:Contains 1 KRAB domain.,similarity:Contains 11 C2H2-type zinc fingers.,tissue specificity:Ubiquitously expressed at low levels. Highest levels are found in pancreas and liver.,

## Research Area

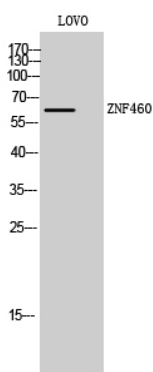
### Image Data



Western blot analysis of lysates from LOVO cells, using ZNF460 Antibody. The lane on the right is blocked with the synthesized peptide.



Western blot analysis of the lysates from HepG2 cells using ZNF460 antibody.



Western Blot analysis of LOVO cells using ZNF460 Polyclonal Antibody. Secondary antibody was diluted at 1:20000.

