
Product Name: ZNF295 Rabbit Polyclonal Antibody**Catalog #: APRab20258**

For research use only.

Summary

Description	Rabbit polyclonal Antibody
Host	Rabbit
Application	IHC,ICC/IF,ELISA
Reactivity	Human,Mouse
Conjugation	Unconjugated
Modification	Unmodified
Isotype	IgG
Clonality	Polyclonal
Form	Liquid
Concentration	1mg/ml
Storage	Aliquot and store at -20°C (valid for 12 months). Avoid freeze/thaw cycles.
Shipping	Ice bags
Buffer	Liquid in PBS containing 50% glycerol, 0.5% protective protein and 0.02% New type preservative N.
Purification	Affinity purification

Application

Dilution Ratio IHC 1:100-1:300,ICC/IF 1:50-1:200,ELISA 1:5000-1:20000

Molecular Weight

Antigen Information

Gene Name	ZNF295
Alternative Names	ZNF295; KIAA1227; ZBTB21; Zinc finger protein 295; Zinc finger and BTB domain-containing protein 21
Gene ID	49854.0
SwissProt ID	Q9ULJ3
Immunogen	The antiserum was produced against synthesized peptide derived from human ZNF295. AA range:731-780

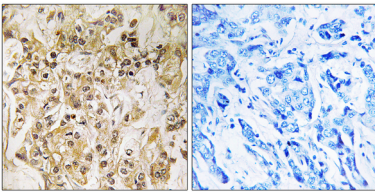
Background

function:May be involved in transcriptional regulation.,PTM:Phosphorylated upon DNA damage, probably by ATM or ATR.,similarity:Contains 1 BTB (POZ) domain.,similarity:Contains 8 C2H2-type zinc fingers.,function:May be involved in transcriptional regulation.,PTM:Phosphorylated upon DNA damage, probably by ATM or ATR.,similarity:Contains 1 BTB (POZ) domain.,similarity:Contains 8 C2H2-type zinc fingers.,

Research Area

Epigenetics and Nuclear Signaling; Transcription; Domain Families; Zinc Finger

Image Data



Immunohistochemistry analysis of paraffin-embedded human breast carcinoma tissue, using ZNF295 Antibody. The picture on the right is blocked with the synthesized peptide.