

**Product Name: ZNF23 Rabbit Polyclonal Antibody****Catalog #: APRab20253**

For research use only.

**Summary**

<b>Description</b>	Rabbit polyclonal Antibody
<b>Host</b>	Rabbit
<b>Application</b>	WB,IHC,ICC/IF,ELISA
<b>Reactivity</b>	Human,Rat,Mouse
<b>Conjugation</b>	Unconjugated
<b>Modification</b>	Unmodified
<b>Isotype</b>	IgG
<b>Clonality</b>	Polyclonal
<b>Form</b>	Liquid
<b>Concentration</b>	1mg/ml
<b>Storage</b>	Aliquot and store at -20°C (valid for 12 months). Avoid freeze/thaw cycles.
<b>Shipping</b>	Ice bags
<b>Buffer</b>	Liquid in PBS containing 50% glycerol, 0.5% protective protein and 0.02% New type preservative N.
<b>Purification</b>	Affinity purification

**Application**

<b>Dilution Ratio</b>	WB 1:500-1:2000,IHC 1:100-1:300,ICC/IF 1:200-1:1000,ELISA 1:5000-1:20000
<b>Molecular Weight</b>	70kDa

**Antigen Information**

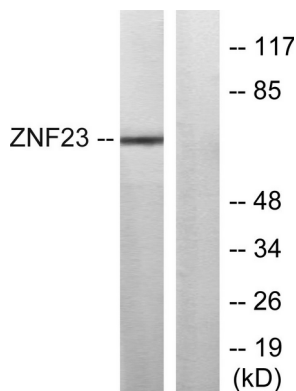
<b>Gene Name</b>	ZNF23
<b>Alternative Names</b>	ZNF23; KOX16; ZNF359; ZNF612; Zinc finger protein 23; Zinc finger protein 359; Zinc finger protein 612; Zinc finger protein KOX16
<b>Gene ID</b>	7571.0
<b>SwissProt ID</b>	P17027
<b>Immunogen</b>	The antiserum was produced against synthesized peptide derived from human ZNF23. AA range:151-200

**Background**

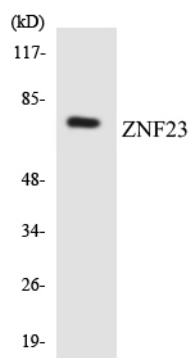
function:May be involved in transcriptional regulation. May have a role in embryonic development.,similarity:Belongs to the krueppel C2H2-type zinc-finger protein family.,similarity:Contains 1 KRAB domain.,similarity:Contains 17 C2H2-type zinc fingers.,function:May be involved in transcriptional regulation. May have a role in embryonic development.,similarity:Belongs to the krueppel C2H2-type zinc-finger protein family.,similarity:Contains 1 KRAB domain.,similarity:Contains 17 C2H2-type zinc fingers.,

## Research Area

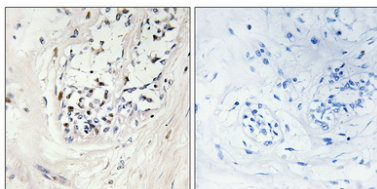
## Image Data



Western blot analysis of lysates from LOVO cells, using ZNF23 Antibody. The lane on the right is blocked with the synthesized peptide.



Western blot analysis of the lysates from RAW264.7 cells using ZNF23 antibody.



Immunohistochemical analysis of paraffin-embedded Human breast cancer. Antibody was diluted at 1:100 (4°, overnight). High-pressure and temperature Tris-EDTA, pH 8.0 was used for antigen retrieval. Negative control (right) obtained from antibody was pre-absorbed by immunogen peptide.