
Product Name: ZNF227 Rabbit Polyclonal Antibody**Catalog #: APRab20252**

For research use only.

Summary

Description	Rabbit polyclonal Antibody
Host	Rabbit
Application	WB,IHC,ICC/IF,ELISA
Reactivity	Human,Rat,Mouse
Conjugation	Unconjugated
Modification	Unmodified
Isotype	IgG
Clonality	Polyclonal
Form	Liquid
Concentration	1mg/ml
Storage	Aliquot and store at -20°C (valid for 12 months). Avoid freeze/thaw cycles.
Shipping	Ice bags
Buffer	Liquid in PBS containing 50% glycerol, 0.5% protective protein and 0.02% New type preservative N.
Purification	Affinity purification

Application

Dilution Ratio	WB 1:500-1:2000,IHC 1:100-1:300,ICC/IF 1:50-1:200,ELISA 1:20000-1:40000
Molecular Weight	92kDa

Antigen Information

Gene Name	ZNF227
Alternative Names	ZNF227; Zinc finger protein 227
Gene ID	7770.0
SwissProt ID	Q86WZ6
Immunogen	Synthesized peptide derived from the Internal region of human ZNF227.

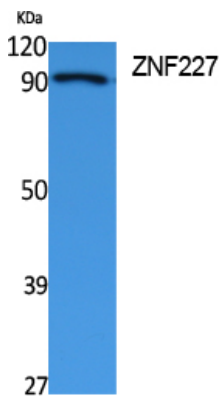
Background

function:May be involved in transcriptional regulation.,similarity:Belongs to the krueppel C2H2-type zinc-finger protein family.,similarity:Contains 1 KRAB domain.,similarity:Contains 19 C2H2-type zinc fingers.,function:May be involved in

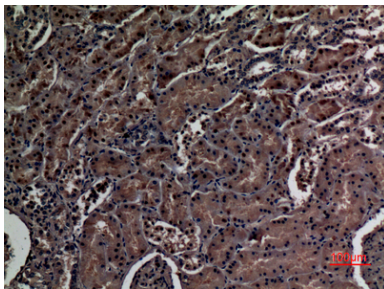
transcriptional regulation.,similarity:Belongs to the krueppel C2H2-type zinc-finger protein family.,similarity:Contains 1 KRAB domain.,similarity:Contains 19 C2H2-type zinc fingers.,

Research Area

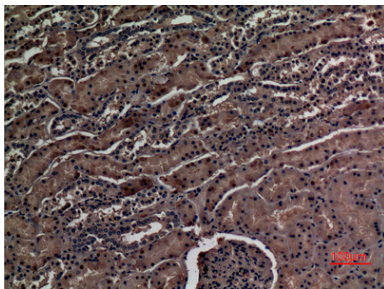
Image Data



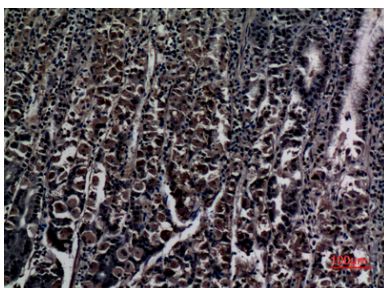
Western Blot analysis of extracts from Jurkat cells, using ZNF227 Polyclonal Antibody.. Secondary antibody was diluted at 1:20000.



Immunohistochemical analysis of paraffin-embedded human-kidney, antibody was diluted at 1:100



Immunohistochemical analysis of paraffin-embedded human-kidney, antibody was diluted at 1:100



Immunohistochemical analysis of paraffin-embedded human-stomach, antibody was diluted at 1:100