

---

**Product Name: ZNF134 Rabbit Polyclonal Antibody****Catalog #: APRab20247**

For research use only.

**Summary**

<b>Description</b>	Rabbit polyclonal Antibody
<b>Host</b>	Rabbit
<b>Application</b>	WB,IHC,ICC/IF,ELISA
<b>Reactivity</b>	Human,Monkey
<b>Conjugation</b>	Unconjugated
<b>Modification</b>	Unmodified
<b>Isotype</b>	IgG
<b>Clonality</b>	Polyclonal
<b>Form</b>	Liquid
<b>Concentration</b>	1mg/ml
<b>Storage</b>	Aliquot and store at -20°C (valid for 12 months). Avoid freeze/thaw cycles.
<b>Shipping</b>	Ice bags
<b>Buffer</b>	Liquid in PBS containing 50% glycerol, 0.5% protective protein and 0.02% New type preservative N.
<b>Purification</b>	Affinity purification

**Application**

<b>Dilution Ratio</b>	WB 1:500-1:2000,IHC 1:100-1:300,ICC/IF 1:50-1:200,ELISA 1:5000-1:20000
<b>Molecular Weight</b>	36kDa

**Antigen Information**

<b>Gene Name</b>	ZNF134
<b>Alternative Names</b>	ZNF134; Zinc finger protein 134
<b>Gene ID</b>	7693.0
<b>SwissProt ID</b>	P52741
<b>Immunogen</b>	The antiserum was produced against synthesized peptide derived from human ZNF134. AA range:116-165

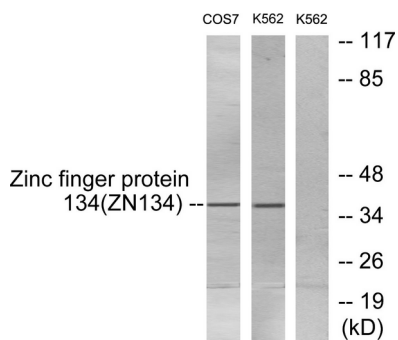
**Background**

function:May be involved in transcriptional regulation.,similarity:Belongs to the krueppel C2H2-type zinc-finger protein

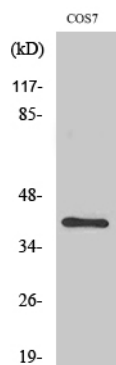
family.,similarity:Contains 11 C2H2-type zinc fingers.,function:May be involved in transcriptional regulation.,similarity:Belongs to the krueppel C2H2-type zinc-finger protein family.,similarity:Contains 11 C2H2-type zinc fingers.,

## Research Area

## Image Data



Western blot analysis of lysates from COS7 and K562 cells, using ZNF134 Antibody. The lane on the right is blocked with the synthesized peptide.



Western Blot analysis of various cells using ZNF134 Polyclonal Antibody diluted at 1 : 1000. Secondary antibody was diluted at 1:20000.