

**Product Name: ZN-16 Rabbit Polyclonal Antibody****Catalog #: APRab20130**

For research use only.

**Summary**

<b>Description</b>	Rabbit polyclonal Antibody
<b>Host</b>	Rabbit
<b>Application</b>	WB,ELISA
<b>Reactivity</b>	Human,Rat,Mouse
<b>Conjugation</b>	Unconjugated
<b>Modification</b>	Unmodified
<b>Isotype</b>	IgG
<b>Clonality</b>	Polyclonal
<b>Form</b>	Liquid
<b>Concentration</b>	1mg/ml
<b>Storage</b>	Aliquot and store at -20°C (valid for 12 months). Avoid freeze/thaw cycles.
<b>Shipping</b>	Ice bags
<b>Buffer</b>	Liquid in PBS containing 50% glycerol, 0.5% protective protein and 0.02% New type preservative N.
<b>Purification</b>	Affinity purification

**Application**

<b>Dilution Ratio</b>	WB 1:500-1:2000,ELISA 1:20000-1:40000
<b>Molecular Weight</b>	300kDa

**Antigen Information**

<b>Gene Name</b>	ZNF292
<b>Alternative Names</b>	ZNF292; KIAA0530; Zinc finger protein 292
<b>Gene ID</b>	23036.0
<b>SwissProt ID</b>	O60281
<b>Immunogen</b>	The antiserum was produced against synthesized peptide derived from human ZNF292. AA range:1311-1360

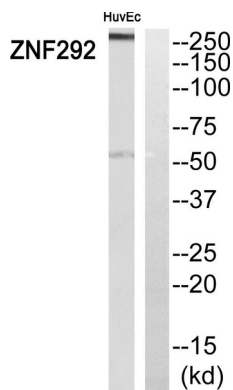
**Background**

function:May be involved in transcriptional regulation.,PTM:Phosphorylated upon DNA damage, probably by ATM or

ATR, similarity: Belongs to the krueppel C2H2-type zinc-finger protein family, similarity: Contains 9 C2H2-type zinc fingers, function: May be involved in transcriptional regulation, PTM: Phosphorylated upon DNA damage, probably by ATM or ATR, similarity: Belongs to the krueppel C2H2-type zinc-finger protein family, similarity: Contains 9 C2H2-type zinc fingers,

## Research Area

## Image Data



Western blot analysis of ZNF292 Antibody. The lane on the right is blocked with the ZNF292 peptide.