

Product Name: ZIP7 Rabbit Polyclonal Antibody**Catalog #: APRab20112**

For research use only.

Summary

Description	Rabbit polyclonal Antibody
Host	Rabbit
Application	WB,ELISA
Reactivity	Human,Mouse,Rat
Conjugation	Unconjugated
Modification	Unmodified
Isotype	IgG
Clonality	Polyclonal
Form	Liquid
Concentration	1mg/ml
Storage	Aliquot and store at -20°C (valid for 12 months). Avoid freeze/thaw cycles.
Shipping	Ice bags
Buffer	Liquid in PBS containing 50% glycerol, 0.5% protective protein and 0.02% New type preservative N.
Purification	Affinity purification

Application

Dilution Ratio	WB 1:500-1:2000,ELISA 1:5000-1:10000
Molecular Weight	50kDa

Antigen Information

Gene Name	SLC39A7
Alternative Names	SLC39A7; HKE4; RING5; Zinc transporter SLC39A7; Histidine-rich membrane protein Ke4; Really interesting new gene 5 protein; Solute carrier family 39 member 7
Gene ID	7922.0
SwissProt ID	Q92504
Immunogen	The antiserum was produced against synthesized peptide derived from human SLC39A7. AA range:131-180

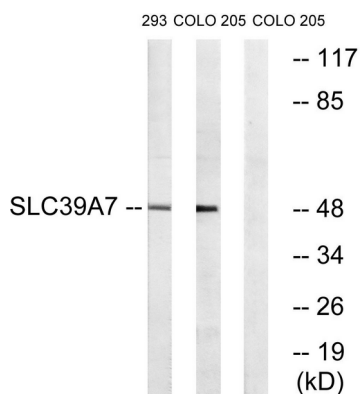
Background

The protein encoded by this gene transports zinc from the Golgi and endoplasmic reticulum to the cytoplasm. This transport may be important for activation of tyrosine kinases, some of which could be involved in cancer progression. Therefore, modulation of the encoded protein could be useful as a therapeutic agent against cancer. Alternative splicing results in multiple transcript variants. [provided by RefSeq, Jan 2014],similarity:Belongs to the ZIP transporter (TC 2.A.5) family. KE4/Catsup subfamily.,tissue specificity:Major expression in placenta, lung, kidney and pancreas.,

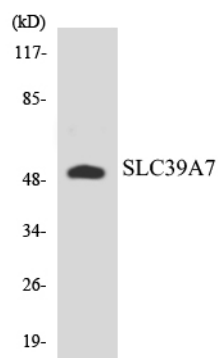
Research Area

Signal Transduction; Metabolism; Vitamins / Minerals; Pathways and Processes; Cofactors, Vitamins / minerals; Vitamins / minerals

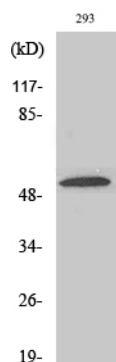
Image Data



Western blot analysis of lysates from 293 and COLO cells, using SLC39A7 Antibody. The lane on the right is blocked with the synthesized peptide.



Western blot analysis of the lysates from HUVEC cells using SLC39A7 antibody.



Western Blot analysis of various cells using ZIP7 Polyclonal Antibody. Secondary antibody was diluted at 1:20000

