

---

**Product Name: Zhangfei Rabbit Polyclonal Antibody****Catalog #: APRab20099**

For research use only.

**Summary**

<b>Description</b>	Rabbit polyclonal Antibody
<b>Host</b>	Rabbit
<b>Application</b>	WB,IHC,ICC/IF,ELISA
<b>Reactivity</b>	Human,Mouse
<b>Conjugation</b>	Unconjugated
<b>Modification</b>	Unmodified
<b>Isotype</b>	IgG
<b>Clonality</b>	Polyclonal
<b>Form</b>	Liquid
<b>Concentration</b>	1mg/ml
<b>Storage</b>	Aliquot and store at -20°C (valid for 12 months). Avoid freeze/thaw cycles.
<b>Shipping</b>	Ice bags
<b>Buffer</b>	Liquid in PBS containing 50% glycerol, 0.5% protective protein and 0.02% New type preservative N.
<b>Purification</b>	Affinity purification

**Application**

<b>Dilution Ratio</b>	WB 1:500-1:2000,IHC 1:100-1:300,ICC/IF 1:200-1:1000,ELISA 1:5000-1:20000
<b>Molecular Weight</b>	26kDa

**Antigen Information**

<b>Gene Name</b>	CREBZF
<b>Alternative Names</b>	CREBZF; ZF; CREB/ATF bZIP transcription factor; Host cell factor-binding transcription factor Zhangfei; HCF-binding transcription factor Zhangfei
<b>Gene ID</b>	58487.0
<b>SwissProt ID</b>	Q9NS37
<b>Immunogen</b>	The antiserum was produced against synthesized peptide derived from human CREBZF. AA range:221-270

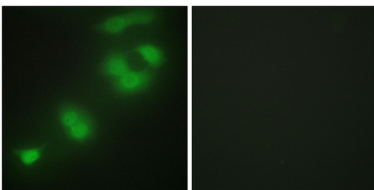
**Background**

function:Strongly activates transcription when bound to HCFC1. Suppresses the expression of HSV proteins in cells infected with the virus in a HCFC1-dependent manner. Also suppresses the HCFC1-dependent transcriptional activation by CREB3 and reduces the amount of CREB3 in the cell. Able to down-regulate expression of some cellular genes in CREBZF-expressing cells.,miscellaneous:Named Zhangfei after a legendary Chinese warrior who was contemporary with Luman in around 220 AD.,similarity:Belongs to the bZIP family. ATF subfamily.,similarity:Contains 1 bZIP domain.,subcellular location:Colocalizes at punctate nuclear structures with CREB3 and HCFC1.,subunit:Interacts with HCFC1, causing suppression of CREB3 transcriptional activity.,tissue specificity:In adults, expressed most abundantly in heart, liver and skeletal muscle, moderately abundant in kidney and pancreas, and barely detectable in lungs. In fetal tissues, expressed most abundantly in kidney and very low amounts in heart, lung and liver.,function:Strongly activates transcription when bound to HCFC1. Suppresses the expression of HSV proteins in cells infected with the virus in a HCFC1-dependent manner. Also suppresses the HCFC1-dependent transcriptional activation by CREB3 and reduces the amount of CREB3 in the cell. Able to down-regulate expression of some cellular genes in CREBZF-expressing cells.,miscellaneous:Named Zhangfei after a legendary Chinese warrior who was contemporary with Luman in around 220 AD.,similarity:Belongs to the bZIP family. ATF subfamily.,similarity:Contains 1 bZIP domain.,subcellular location:Colocalizes at punctate nuclear structures with CREB3 and HCFC1.,subunit:Interacts with HCFC1, causing suppression of CREB3 transcriptional activity.,tissue specificity:In adults, expressed most abundantly in heart, liver and skeletal muscle, moderately abundant in kidney and pancreas, and barely detectable in lungs. In fetal tissues, expressed most abundantly in kidney and very low amounts in heart, lung and liver.,

## Research Area

Epigenetics and Nuclear Signaling; Transcription; Other factors

## Image Data



Immunofluorescence analysis of HepG2 cells, using CREBZF Antibody. The picture on the right is blocked with the synthesized peptide.