
Product Name: ZFY26 Rabbit Polyclonal Antibody**Catalog #: APRab20094**

For research use only.

Summary

Description	Rabbit polyclonal Antibody
Host	Rabbit
Application	IHC,ICC/IF
Reactivity	Human,Rat,Mouse
Conjugation	Unconjugated
Modification	Unmodified
Isotype	IgG
Clonality	Polyclonal
Form	Liquid
Concentration	1mg/ml
Storage	Aliquot and store at -20°C (valid for 12 months). Avoid freeze/thaw cycles.
Shipping	Ice bags
Buffer	Liquid in PBS containing 50% glycerol, and 0.02% New type preservative N.
Purification	Affinity purification

Application

Dilution Ratio	IHC 1:50-1:300,ICC/IF 1:50-1:200
Molecular Weight	279kDa

Antigen Information

Gene Name	ZFYVE26
Alternative Names	KIAA0321
Gene ID	23503.0
SwissProt ID	Q68DK2
Immunogen	Synthesized peptide derived from human protein . at AA range: 2381-2430

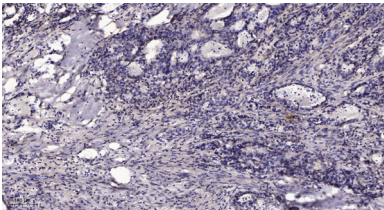
Background

This gene encodes a protein which contains a FYVE zinc finger binding domain. The presence of this domain is thought to target these proteins to membrane lipids through interaction with phospholipids in the membrane. Mutations in this gene are associated with autosomal recessive spastic paraplegia-15. [provided by RefSeq, Oct 2008],disease:Defects in ZFYVE26 are the

cause of spastic paraplegia autosomal recessive type 15 (SPG15) [MIM:270700]; also known as spastic paraplegia and retinal degeneration or Kjellin syndrome. Spastic paraplegia is a neurodegenerative disorder characterized by a slow, gradual, progressive weakness and spasticity of the lower limbs. Rate of progression and the severity of symptoms are quite variable. Initial symptoms may include difficulty with balance, weakness and stiffness in the legs, muscle spasms, and dragging the toes when walking. In some forms of the disorder, bladder symptoms (such as incontinence) may appear, or the weakness and stiffness may spread to other parts of the body. SPG15 is a complex form associated with additional neurological symptoms such as cognitive deterioration or mental retardation, axonal neuropathy, mild cerebellar signs, and, less frequently, a central hearing deficit, decreased visual acuity, or retinal degeneration.,sequence caution:Translated as Gln.,similarity:Contains 1 FYVE-type zinc finger.,tissue specificity:Strongest expression in the adrenal gland, bone marrow, adult brain, fetal brain, lung, placenta, prostate, skeletal muscle, testis, thymus, and retina. Intermediate levels are detected in other structures, including the spinal cord.,

Research Area

Image Data



Immunohistochemical analysis of paraffin-embedded human Gastric adenocarcinoma. 1, Antibody was diluted at 1:200 (4° overnight) . 2, Tris-EDTA,pH9.0 was used for antigen retrieval. 3,Secondary antibody was diluted at 1:200 (room temperature, 45min) .