

Product Name: ZFP106 Rabbit Polyclonal Antibody**Catalog #: APRab20087**

For research use only.

Summary

Description	Rabbit polyclonal Antibody
Host	Rabbit
Application	WB,ELISA
Reactivity	Human,Mouse,Monkey
Conjugation	Unconjugated
Modification	Unmodified
Isotype	IgG
Clonality	Polyclonal
Form	Liquid
Concentration	1mg/ml
Storage	Aliquot and store at -20°C (valid for 12 months). Avoid freeze/thaw cycles.
Shipping	Ice bags
Buffer	Liquid in PBS containing 50% glycerol, 0.5% protective protein and 0.02% New type preservative N.
Purification	Affinity purification

Application

Dilution Ratio	WB 1:500-1:2000,ELISA 1:5000-1:20000
Molecular Weight	209kDa

Antigen Information

Gene Name	ZFP106
Alternative Names	ZFP106; SH3BP3; ZNF474; Zinc finger protein 106 homolog; Zfp-106; Zinc finger protein 474
Gene ID	64397.0
SwissProt ID	Q9H2Y7
Immunogen	The antiserum was produced against synthesized peptide derived from human ZFP106. AA range:1833-1882

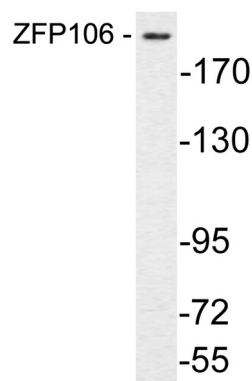
Background

PTM:Phosphorylated upon DNA damage, probably by ATM or ATR.,sequence caution:Contaminating sequence. Potential poly-

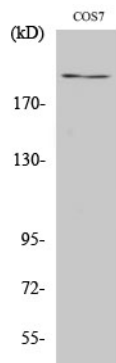
A sequence, similarity: Contains 2 C2H2-type zinc fingers, similarity: Contains 6 WD repeats, subunit: Interacts with TSG118, PTM: Phosphorylated upon DNA damage, probably by ATM or ATR, sequence caution: Contaminating sequence. Potential poly-A sequence, similarity: Contains 2 C2H2-type zinc fingers, similarity: Contains 6 WD repeats, subunit: Interacts with TSG118,

Research Area

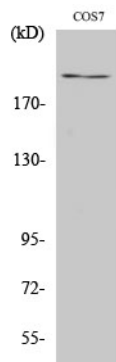
Image Data



Western blot analysis of lysate from COS7 cells, using ZFP106 antibody.



Western Blot analysis of various cells using ZFP106 Polyclonal Antibody. Secondary antibody was diluted at 1:20000



Western Blot analysis of COS7 cells using ZFP106 Polyclonal Antibody. Secondary antibody was diluted at 1:20000