

Product Name: ZDHHC15 Rabbit Polyclonal Antibody**Catalog #: APRab20065**

For research use only.

Summary

Description	Rabbit polyclonal Antibody
Host	Rabbit
Application	WB,ELISA
Reactivity	Human,Rat,Mouse
Conjugation	Unconjugated
Modification	Unmodified
Isotype	IgG
Clonality	Polyclonal
Form	Liquid
Concentration	1mg/ml
Storage	Aliquot and store at -20°C (valid for 12 months). Avoid freeze/thaw cycles.
Shipping	Ice bags
Buffer	Liquid in PBS containing 50% glycerol, 0.5% protective protein and 0.02% New type preservative N.
Purification	Affinity purification

Application

Dilution Ratio	WB 1:500-1:2000,ELISA 1:5000-1:20000
Molecular Weight	38kDa

Antigen Information

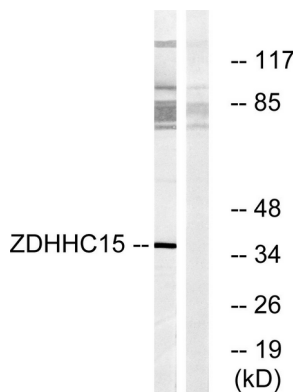
Gene Name	ZDHHC15
Alternative Names	ZDHHC15; Palmitoyltransferase ZDHHC15; Zinc finger DHHC domain-containing protein 15; DHHC-15
Gene ID	158866.0
SwissProt ID	Q96MV8
Immunogen	The antiserum was produced against synthesized peptide derived from human ZDHHC15. AA range:288-337

Background

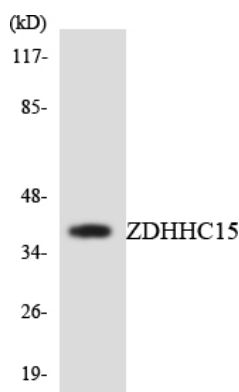
The protein encoded by this gene belongs to the DHHC palmitoyltransferase family. Mutations in this gene are associated with mental retardatio X-linked type 91 (MRX91). Alternatively spliced transcript variants encoding different isoforms have been found for this gene. [provided by RefSeq, Sep 2009],catalytic activity:Palmitoyl-CoA + protein-cysteine = S-palmitoyl protein + CoA.,disease:Defects in ZDHHC15 are the cause of mental retardation X-linked type 91 (MRX91) [MIM:300577]. Mental retardation is characterized by significantly sub-average general intellectual functioning associated with impairments in adaptative behavior and manifested during the developmental period. Non-syndromic mental retardation patients do not manifest other clinical signs.,domain:The DHHC domain is required for palmitoyltransferase activity.,function:Palmitoyltransferase specific for GAP43 and DLG4/PSD95.,PTM:Autopalmitoylated.,similarity:Belongs to the DHHC palmitoyltransferase family.,similarity:Contains 1 DHHC-type zinc finger.,tissue specificity:Expressed in placenta, liver, lung, kidney, heart and brain.,

Research Area

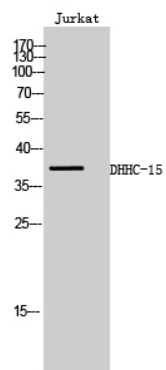
Image Data



Western blot analysis of lysates from Jurkat cells, using ZDHHC15 Antibody. The lane on the right is blocked with the synthesized peptide.



Western blot analysis of the lysates from 293 cells using ZDHHC15 antibody.



Western Blot analysis of Jurkat cells using DHHc-15 Polyclonal Antibody