

Product Name: ZC3H13 Rabbit Polyclonal Antibody**Catalog #: APRab20052**

For research use only.

Summary

Description	Rabbit polyclonal Antibody
Host	Rabbit
Application	WB,ELISA
Reactivity	Human,Mouse
Conjugation	Unconjugated
Modification	Unmodified
Isotype	IgG
Clonality	Polyclonal
Form	Liquid
Concentration	1mg/ml
Storage	Aliquot and store at -20°C (valid for 12 months). Avoid freeze/thaw cycles.
Shipping	Ice bags
Buffer	Liquid in PBS containing 50% glycerol, 0.5% protective protein and 0.02% New type preservative N.
Purification	Affinity purification

Application

Dilution Ratio	WB 1:500-1:2000,ELISA 1:5000-1:20000
Molecular Weight	200kDa

Antigen Information

Gene Name	ZC3H13
Alternative Names	ZC3H13; KIAA0853; Zinc finger CCCH domain-containing protein 13
Gene ID	23091.0
SwissProt ID	Q5T200
Immunogen	The antiserum was produced against synthesized peptide derived from human ZC3H13. AA range:1571-1620

Background

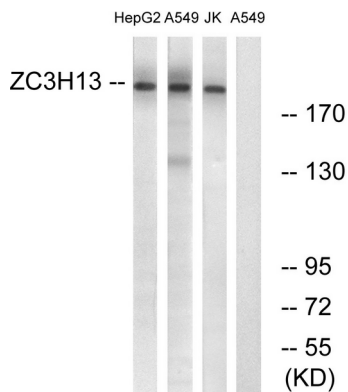
PTM:Phosphorylated upon DNA damage, probably by ATM or ATR.,similarity:Contains 1 C3H1-type zinc

finger.,PTM:Phosphorylated upon DNA damage, probably by ATM or ATR.,similarity:Contains 1 C3H1-type zinc finger.,

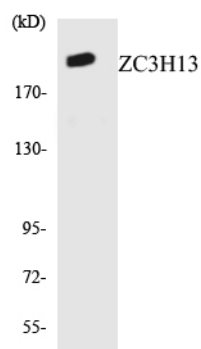
Research Area

Cell Biology; Other Antibodies

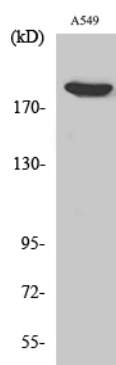
Image Data



Western blot analysis of lysates from A549, Jurkat, HepG2 cells, using ZC3H13 Antibody. The lane on the right is blocked with the synthesized peptide.



Western blot analysis of the lysates from HUVEC cells using ZC3H13 antibody.



Western Blot analysis of various cells using ZC3H13 Polyclonal Antibody. Secondary antibody was diluted at 1:20000