
Product Name: ZC3H11A Rabbit Polyclonal Antibody**Catalog #: APRab20051**

For research use only.

Summary

Description	Rabbit polyclonal Antibody
Host	Rabbit
Application	WB,ELISA
Reactivity	Human,Monkey
Conjugation	Unconjugated
Modification	Unmodified
Isotype	IgG
Clonality	Polyclonal
Form	Liquid
Concentration	1mg/ml
Storage	Aliquot and store at -20°C (valid for 12 months). Avoid freeze/thaw cycles.
Shipping	Ice bags
Buffer	Liquid in PBS containing 50% glycerol, 0.5% protective protein and 0.02% New type preservative N.
Purification	Affinity purification

Application

Dilution Ratio	WB 1:500-1:2000,ELISA 1:10000-1:20000
Molecular Weight	110kDa

Antigen Information

Gene Name	ZC3H11A
Alternative Names	ZC3H11A; KIAA0663; ZC3HDC11A; Zinc finger CCCH domain-containing protein 11A
Gene ID	9877.0
SwissProt ID	O75152
Immunogen	The antiserum was produced against synthesized peptide derived from human ZC3H11A. AA range:291-340

Background

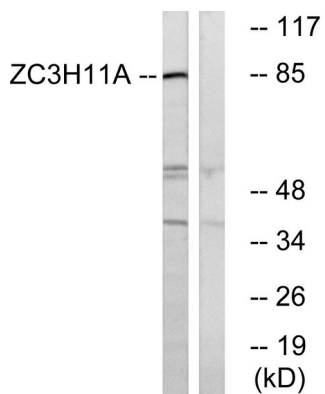
PTM:Phosphorylated upon DNA damage, probably by ATM or ATR.,sequence caution:Contaminating sequence. Potential poly-

A sequence.,similarity:Contains 3 C3H1-type zinc fingers.,PTM:Phosphorylated upon DNA damage, probably by ATM or ATR.,sequence caution:Contaminating sequence. Potential poly-A sequence.,similarity:Contains 3 C3H1-type zinc fingers.,

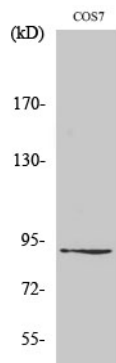
Research Area

Epigenetics and Nuclear Signaling; Transcription; Domain Families; Zinc Finger

Image Data



Western blot analysis of lysates from COS cells, using ZC3H11A Antibody. The lane on the right is blocked with the synthesized peptide.



Western Blot analysis of various cells using ZC3H11A Polyclonal Antibody diluted at 1: 1000. Secondary antibody was diluted at 1:20000