

Product Name: ZC3H1 Rabbit Polyclonal Antibody**Catalog #: APRab20050**

For research use only.

Summary

Description	Rabbit polyclonal Antibody
Host	Rabbit
Application	WB,ELISA
Reactivity	Human,Rat,Mouse
Conjugation	Unconjugated
Modification	Unmodified
Isotype	IgG
Clonality	Polyclonal
Form	Liquid
Concentration	1mg/ml
Storage	Aliquot and store at -20°C (valid for 12 months). Avoid freeze/thaw cycles.
Shipping	Ice bags
Buffer	Liquid in PBS containing 50% glycerol, and 0.02% New type preservative N.
Purification	Affinity purification

Application

Dilution Ratio	WB 1:500-1:2000,ELISA 1:5000-1:20000
Molecular Weight	218kDa

Antigen Information

Gene Name	ZFC3H1 CCDC131 KIAA0546 PSRC2
Alternative Names	
Gene ID	196441.0
SwissProt ID	O60293
Immunogen	Synthesized peptide derived from part region of human protein

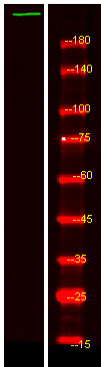
Background

PTM:Phosphorylated upon DNA damage, probably by ATM or ATR.,similarity:Contains 1 C3H1-type zinc finger.,similarity:Contains 5 TPR repeats.,similarity:Contains 6 HAT repeats.,PTM:Phosphorylated upon DNA damage, probably by ATM or ATR.,similarity:Contains 1 C3H1-type zinc finger.,similarity:Contains 5 TPR repeats.,similarity:Contains 6 HAT

repeats.,

Research Area

Image Data



Western Blot analysis of HEK293 lysis, using primary antibody at 1:1000 dilution.
Secondary antibody was diluted at 1:10000